

Proudly made in the U.S.A.



Racing Sway Bars



Products Used



Authorized Distributor

RacingSwayBars.com

866-799-9417

MANUFACTURERS OF SUSPENSION, VALVE SPRING, SWAY BARS AND OTHER QUALITY PRODUCTS

About PAC Racing Springs

We are a manufacturer of Suspension Springs, Valve Springs, Spring Retainer Products, Sway Bars, and many other metal components.

PAC Racing Springs is a stand alone division of Peterson Spring which has been in business for over 100 years. **Peterson Spring is the largest family owned and privately held spring company in the United States.** While PAC Racing Springs specializes in valve springs, we have developed a substantial suspension spring product line, this product utilizes our technology from valve springs. PAC Racing Springs has world class engineering, materials, testing, manufacturing, and distribution systems that will react to your needs.

Why are PAC Racing Sway Bars Better?

We demand the highest technology and best performance from our products-we work very diligently ensuring our designs, materials, and processing withstand all performance requirements. **Years of experience in high stressed valve springs and race engines, provides understanding on what it takes to manufacture a lighter, better performing sway bar.**

We validate these claims by testing the competition in our Dynamics Laboratory, setting baseline standards to exceed current sag (load loss), spring weight, and fatigue life. Cost is always a factor and with being a division of Peterson Spring, it allows for our metallurgists to demand the highest strength alloys, while leveraging our suppliers to meet market price demands.

Contents

Page

□ Sway Bar Kits	4-5
□ Sway Bars	6-14
□ Bushings and Axle Tabs	15-17
□ Short Course Sway Bars	18-20
□ Link Arms and Inserts	21-27
□ Radius Rods	28
□ Rod Ends	29-30
□ Custom Order Sheet	31

• FK Rod Ends were selected because they cater to high stress racing applications. All rod ends are made in the USA, the way it should be!



• ARP Racing Products fasteners were also selected for their high performance reputation.



If you race, you should be using ARP hardware to get you to the finish line.

Sway Bar Powder Coat Options

Standard Color Option - Orange

Custom Colors and Pantones Available to Match Any Application

Additional charge of \$25.00 per component
Setup charge of \$35.00

Why Do We Powdercoat?

1. We coat sway bars to prevent rust - rust pitting could cause bar failure.
2. Better coating than paint with improved corrosion resistance - longer life.
3. Thicker coating without runs or sags.
4. Practically no waste from overspray.
5. Less VOC's transmitted to environment - more environmentally friendly.

New bar with powdercoat

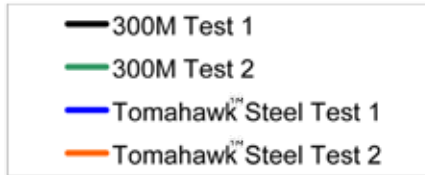
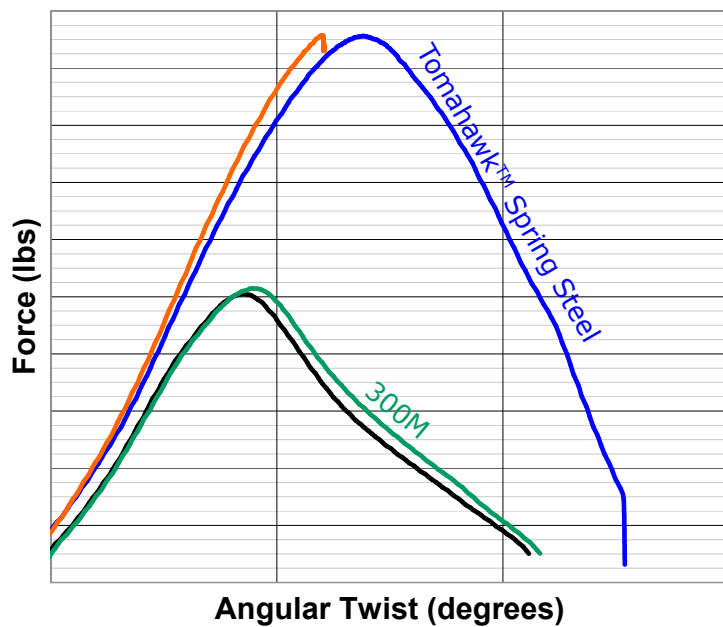


Uncoated bar after one year of racing



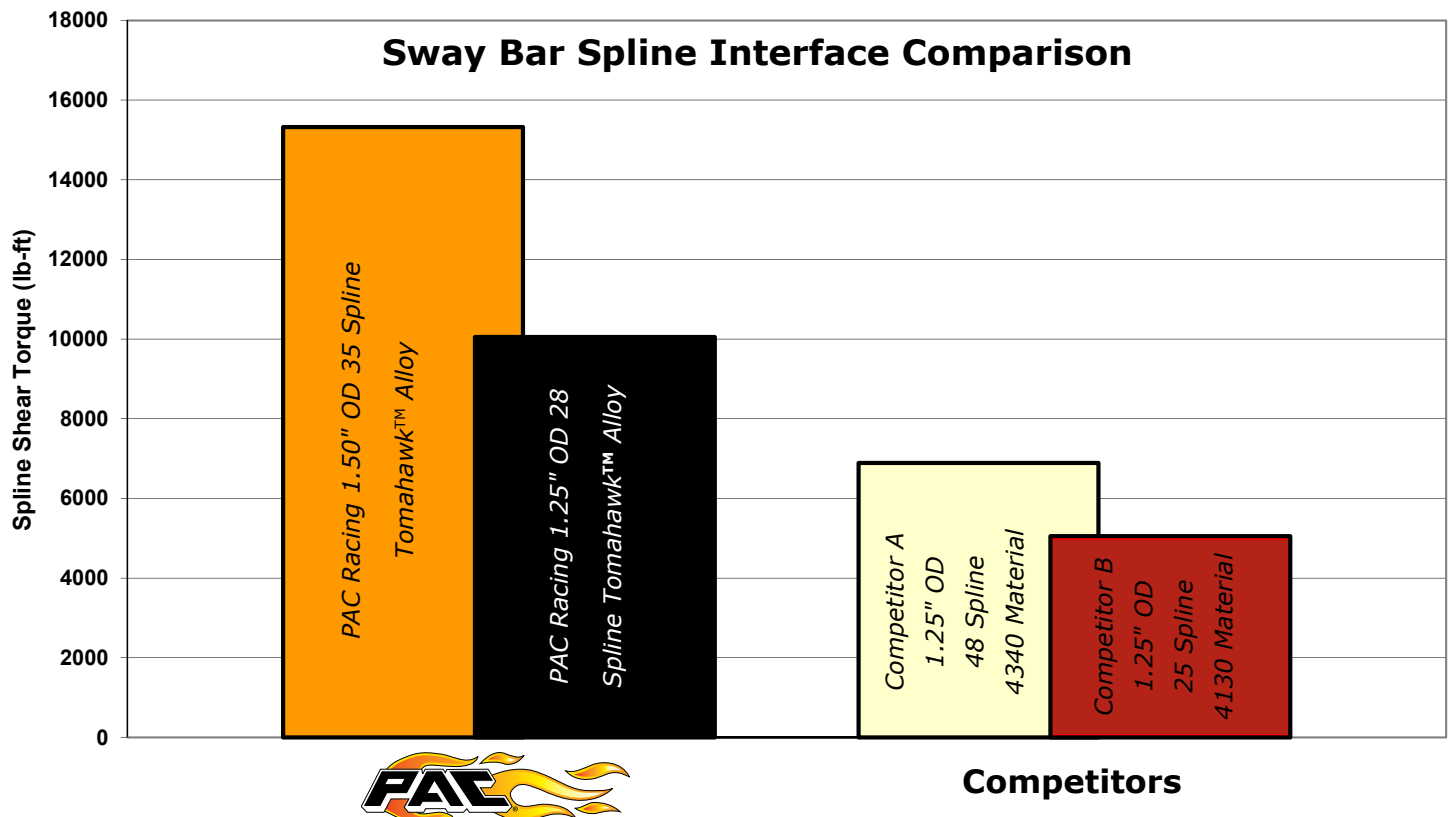


Tomahawk™ Spring Steel 30-40% Better Ultimate Tensile Strength(UTS)



PAC Racing has performed extensive testing evaluating the strength of Tomahawk™ Steel vs. the previous industry standard for performance : 300M. Our results speak for themselves, and we provide a sway bar material that is stronger with better fatigue life at about the same cost!

PAC Racing has also designed a superior spline interface compared to the competition. The count and geometry of the splines is only a small part of the picture, as material (Tomahawk™ is stronger), spline length, and the clamping force all contribute to increasing the Spline Shear Torque. Because our shear torque is greater, we can safely run aluminum arms without risk of stripping out the splines.



Sway Bar Kits

In order to make it easy to purchase an entire sway bar setup, we have assembled all of the components into a kit. Kits are separated based on the sway bar material, link arm style, and sway bar length.

We are offering a 5% discount when ordering a kit vs. all of the components individually!

SPORTSMAN OFFROAD - STEEL SWAY BAR, MILD STEEL OR 6061-T6 INSERTS

Includes:

- Tomahawk™ steel Sway Bar (specify overall length, active diameter) - Pages 6-7
- Pair of Mild Steel or 6061-T6 Link Arm Inserts - Page 25
- Pair of Rectangular Steel Arms (specify Length) - Page 25
- Pair of welded radius rods (specify overall length) - Page 28
- 4 standard rod ends (2 right hand, 2 left hand) - Page 29
- Pair of sway bar mounting bushings (specify tubing size and shoulder width) - Pages 15-16
- All hardware to bolt everything together



SPORTSMAN OFFROAD - STEEL SWAY BAR, 7075 INSERTS

Includes:

- Tomahawk™ steel Sway Bar (specify overall length, active diameter) - Pages 6-7
- Pair of 7075 Link Arm Inserts - Page 25
- Pair of Rectangular Steel Arms (specify Length) - Page 25
- Pair of welded radius rods (specify overall length) - Page 28
- 4 standard rod ends (2 right hand, 2 left hand) - Page 29
- Pair of sway bar mounting bushings (specify tubing size and shoulder width) - Pages 15-16
- All hardware to bolt everything together





PREMIUM KIT - STEEL SWAY BAR, ALUMINUM ARMS

- Includes:
- Tomahawk™ steel Sway Bar (specify overall length, active diameter) - Pages 6-7
 - Pair of Aluminum Arms (specify length, style) - Pages 22-23
 - Pair of 7075 Clevis - Page 24
 - Pair of welded radius rods (specify overall length) - Page 28
 - Pair of premium rod ends (2 left hand) - Page 29
 - Pair of sway bar mounting bushings (specify tubing size and shoulder width) - Pages 15-16
 - All hardware to bolt everything together



PRO BUILDER KIT - STEEL SWAY BAR, ROUND SPLINED INSERTS

- Includes:
- Tomahawk™ Steel Sway Bar (specify overall length, active diameter) - Pages 6-7
 - Pair of 4130 Round Link Arm Inserts - Page 26
 - 4 Steel Arm Side Plates (specify length and thickness) - Page 27
 - Pair of Spline Clamp Tubes - Page 26
 - 4 Steel Strips to Box in the side plates - Page 27
 - Pair of welded radius rods (specify overall length) - Page 28
 - 4 standard rod ends (2 right hand, 2 left hand) - Page 29
 - Pair of sway bar mounting bushings (specify tubing size and shoulder width) - Pages 15-16
 - All hardware to bolt everything together

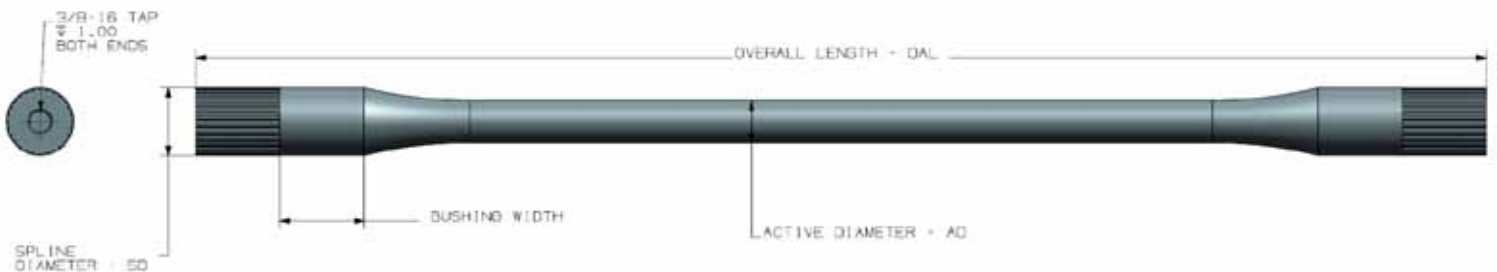
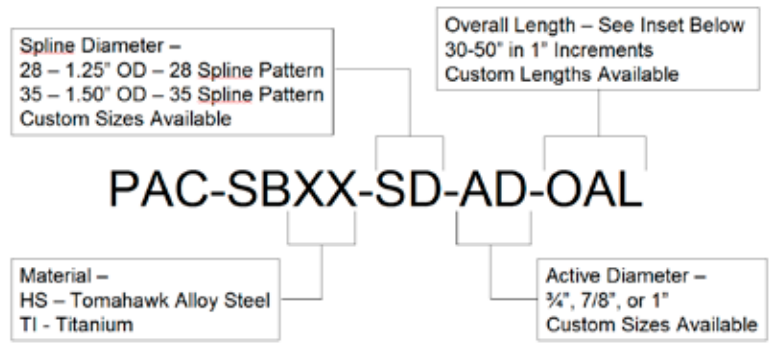


Sway Bars

Our Sway Bars are made of a premium Tomahawk™ steel alloy. Tomahawk™ alloy is 15-25% stronger when compared to 300M!

All Tomahawk™ alloy sway bar purchases come fully backed with a 5 warranty against failure due to normal operation conditions*

**Note - Warranty not valid against failures caused by rust, vehicle crashes/damage, or use in a manner not conducive to normal operation. Any machining to the sway bar immediately voids the warranty.*



Sway Bar Overall Length Definition (OAL)

Sway Bar overall lengths (OAL) may vary depending on your application and mounting configuration. If mounting inside a chassis tube, measure the overall length of the tube.

- If the tube is a whole number (eg. 30"), use the 300302-X series bushings, and add 3" to get the length of sway bar that is needed.
- If the tube is 1/4" over a whole number (eg. 30.25"), use the 300305-X bushing, and add 3.75" to get the length of sway bar that is needed.
- If the tube is 1/2" over a whole number (eg. 30.50"), use the 300304-X bushing, and add 3.50" to get the length of sway bar that is needed.
- If the tube is 3/4" over a whole number (eg. 30.75"), use the 300303-X bushing, and add 3.25" to get the length of sway bar that is needed.

Custom Orders

We can fabricate sway bars to any overall length (OAL), Active Diameter (rate), or spline configuration

See Page 31 of the catalog for our custom sway bar order sheet. See technical data on sheets 8-9 for information on rates and how your link arm lengths will affect how the Sway Bar system behaves, or call to speak with one of our engineers for assistance.

28 Spline Tomahawk™ Steel Sway Bars

Part number includes small package of loctite, custom fender washers and ARP flanged head cap screws for the end of the sway bar.

0.750" Active Diameter Bars

Part No. (For Titanium, Substitute TI for HS)	OAL	Mounting Width	Active Diameter	Bushing Width
PAC-SBHS-28-75-30	30.0	27.0	0.750	1.50
PAC-SBHS-28-75-31	31.0	28.0	0.750	1.50
PAC-SBHS-28-75-32	32.0	29.0	0.750	1.50
PAC-SBHS-28-75-33	33.0	30.0	0.750	1.50
PAC-SBHS-28-75-34	34.0	31.0	0.750	1.50
PAC-SBHS-28-75-35	35.0	32.0	0.750	1.50
PAC-SBHS-28-75-36	36.0	33.0	0.750	1.50
PAC-SBHS-28-75-37	37.0	34.0	0.750	1.50
PAC-SBHS-28-75-38	38.0	35.0	0.750	1.50
PAC-SBHS-28-75-39	39.0	36.0	0.750	1.50
PAC-SBHS-28-75-40	40.0	37.0	0.750	1.50
PAC-SBHS-28-75-41	41.0	38.0	0.750	1.50
PAC-SBHS-28-75-42	42.0	39.0	0.750	1.50
PAC-SBHS-28-75-43	43.0	40.0	0.750	1.50
PAC-SBHS-28-75-44	44.0	41.0	0.750	1.50
PAC-SBHS-28-75-45	45.0	42.0	0.750	1.50
PAC-SBHS-28-75-46	46.0	43.0	0.750	1.50
PAC-SBHS-28-75-47	47.0	44.0	0.750	1.50
PAC-SBHS-28-75-48	48.0	45.0	0.750	1.50
PAC-SBHS-28-75-49	49.0	46.0	0.750	1.50
PAC-SBHS-28-75-50	50.0	47.0	0.750	1.50

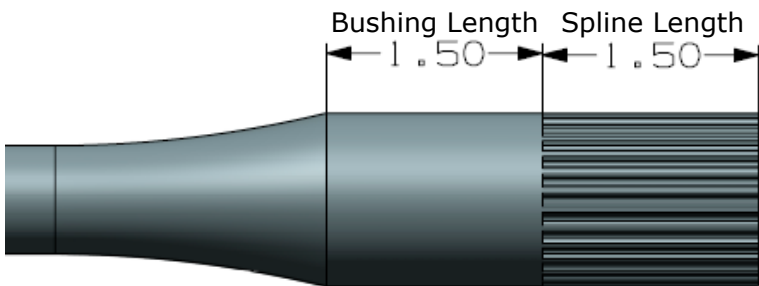
1.000" Active Diameter Bars

Part No. (For Titanium, Substitute TI for HS)	OAL	Mounting Width	Active Diameter	Bushing Width
PAC-SBHS-28-100-30	30.0	27.0	1.00	1.50
PAC-SBHS-28-100-31	31.0	28.0	1.00	1.50
PAC-SBHS-28-100-32	32.0	29.0	1.00	1.50
PAC-SBHS-28-100-33	33.0	30.0	1.00	1.50
PAC-SBHS-28-100-34	34.0	31.0	1.00	1.50
PAC-SBHS-28-100-35	35.0	32.0	1.00	1.50
PAC-SBHS-28-100-36	36.0	33.0	1.00	1.50
PAC-SBHS-28-100-37	37.0	34.0	1.00	1.50
PAC-SBHS-28-100-38	38.0	35.0	1.00	1.50
PAC-SBHS-28-100-39	39.0	36.0	1.00	1.50
PAC-SBHS-28-100-40	40.0	37.0	1.00	1.50
PAC-SBHS-28-100-41	41.0	38.0	1.00	1.50
PAC-SBHS-28-100-42	42.0	39.0	1.00	1.50
PAC-SBHS-28-100-43	43.0	40.0	1.00	1.50
PAC-SBHS-28-100-44	44.0	41.0	1.00	1.50
PAC-SBHS-28-100-45	45.0	42.0	1.00	1.50
PAC-SBHS-28-100-46	46.0	43.0	1.00	1.50
PAC-SBHS-28-100-47	47.0	44.0	1.00	1.50
PAC-SBHS-28-100-48	48.0	45.0	1.00	1.50
PAC-SBHS-28-100-49	49.0	46.0	1.00	1.50
PAC-SBHS-28-100-50	50.0	47.0	1.00	1.50

0.875" Active Diameter Bars

Part No. (For Titanium, Substitute TI for HS)	OAL	Mounting Width	Active Diameter	Bushing Width
PAC-SBHS-28-875-30	30.0	27.0	0.875	1.50
PAC-SBHS-28-875-31	31.0	28.0	0.875	1.50
PAC-SBHS-28-875-32	32.0	29.0	0.875	1.50
PAC-SBHS-28-875-33	33.0	30.0	0.875	1.50
PAC-SBHS-28-875-34	34.0	31.0	0.875	1.50
PAC-SBHS-28-875-35	35.0	32.0	0.875	1.50
PAC-SBHS-28-875-36	36.0	33.0	0.875	1.50
PAC-SBHS-28-875-37	37.0	34.0	0.875	1.50
PAC-SBHS-28-875-38	38.0	35.0	0.875	1.50
PAC-SBHS-28-875-39	39.0	36.0	0.875	1.50
PAC-SBHS-28-875-40	40.0	37.0	0.875	1.50
PAC-SBHS-28-875-41	41.0	38.0	0.875	1.50
PAC-SBHS-28-875-42	42.0	39.0	0.875	1.50
PAC-SBHS-28-875-43	43.0	40.0	0.875	1.50
PAC-SBHS-28-875-44	44.0	41.0	0.875	1.50
PAC-SBHS-28-875-45	45.0	42.0	0.875	1.50
PAC-SBHS-28-875-46	46.0	43.0	0.875	1.50
PAC-SBHS-28-875-47	47.0	44.0	0.875	1.50
PAC-SBHS-28-875-48	48.0	45.0	0.875	1.50
PAC-SBHS-28-875-49	49.0	46.0	0.875	1.50
PAC-SBHS-28-875-50	50.0	47.0	0.875	1.50

= In Stock
 = Special Order
 (2-3 week lead time)



PAC Racing selected the highest quality hardware available for the bolts in the end of the sway bar. ARP has years of racing experience to get you to the finish line!

28 SPLINE TOMAHAWK™ STEEL SWAY BAR TECHNICAL DATA

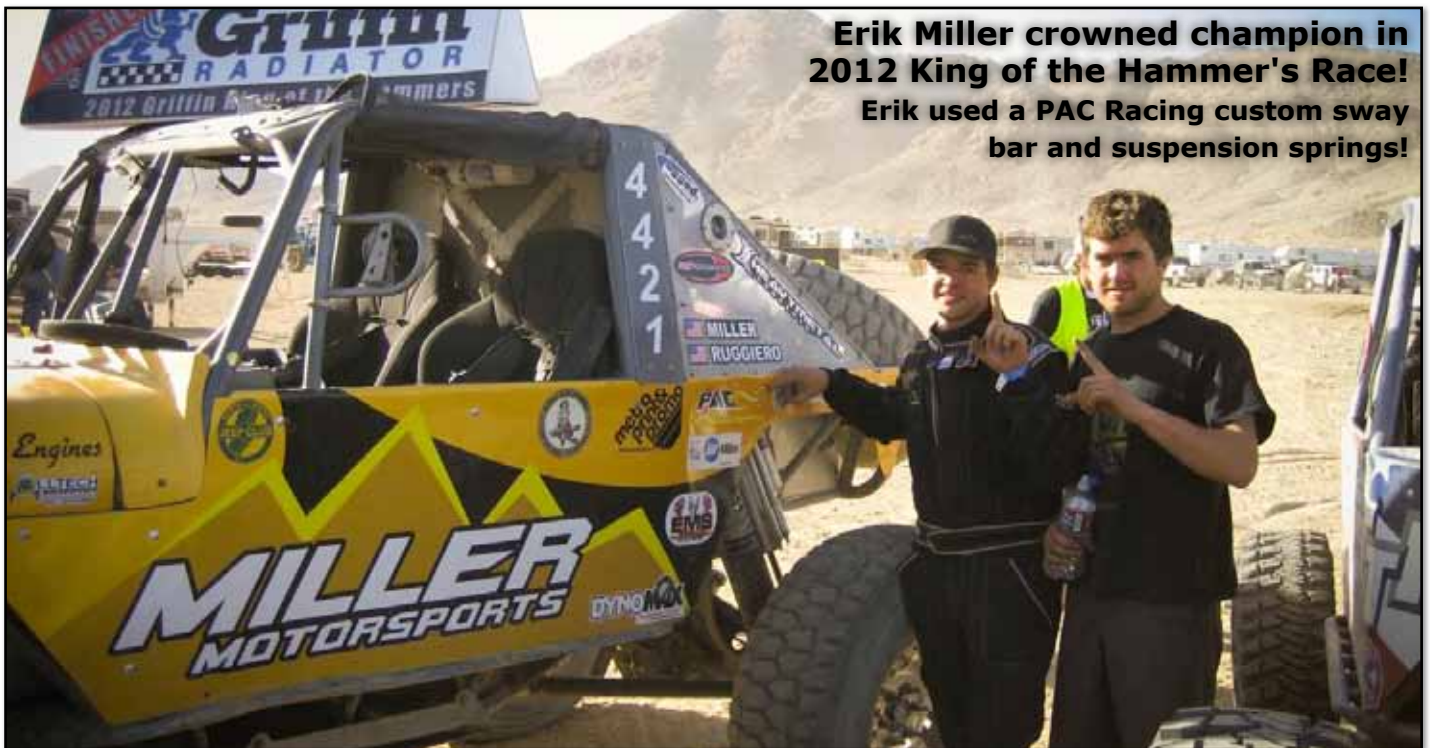
Part Number	Overall Length (in)	Weight (lbs)	Stiffness (lb-ft/deg)	30 Degree Twist					45 Degree Twist					60 Degree Twist				
				12" Link Arm Reaction Force (Lbs)	15" Link Arm Reaction Force (Lbs)	18" Link Arm Reaction Force (Lbs)	21" Link Arm Reaction Force (Lbs)	24" Link Arm Reaction Force (Lbs)	12" Link Arm Reaction Force (Lbs)	15" Link Arm Reaction Force (Lbs)	18" Link Arm Reaction Force (Lbs)	21" Link Arm Reaction Force (Lbs)	24" Link Arm Reaction Force (Lbs)	12" Link Arm Reaction Force (Lbs)	15" Link Arm Reaction Force (Lbs)	18" Link Arm Reaction Force (Lbs)	21" Link Arm Reaction Force (Lbs)	24" Link Arm Reaction Force (Lbs)
0.750" Active Diameter 28 Spline Sway Bar																		
PAC-SBHS-28-75-30	30.0	17.0	21.04	631	505	421	361	316	947	758	631	541	473	1263	1010	842	721	631
PAC-SBHS-28-75-31	31.0	17.5	20.24	607	486	405	347	304	911	729	607	520	455	1214	971	809	694	607
PAC-SBHS-28-75-32	32.0	18.0	19.49	585	468	390	334	292	877	702	585	501	439	1169	936	780	668	585
PAC-SBHS-28-75-33	33.0	18.5	18.80	564	451	376	322	282	846	677	564	483	423	1128	902	752	645	564
PAC-SBHS-28-75-34	34.0	19.0	18.15	545	436	363	311	272	817	653	545	467	408	1089	871	726	622	545
PAC-SBHS-28-75-35	35.0	19.5	17.55	526	421	351	301	263	790	632	526	451	395	1053	842	702	602	526
PAC-SBHS-28-75-36	36.0	20.0	16.99	510	408	340	291	255	764	611	510	437	382	1019	815	679	582	510
PAC-SBHS-28-75-37	37.0	20.5	16.46	494	395	329	282	247	741	592	494	423	370	987	790	658	564	494
PAC-SBHS-28-75-38	38.0	21.0	15.96	479	383	319	274	239	718	575	479	410	359	958	766	638	547	479
PAC-SBHS-28-75-39	39.0	21.5	15.49	465	372	310	266	232	697	558	465	398	349	930	744	620	531	465
PAC-SBHS-28-75-40	40.0	22.0	15.05	452	361	301	258	226	677	542	452	387	339	903	722	602	516	452
PAC-SBHS-28-75-41	41.0	22.5	14.63	439	351	293	251	220	659	527	439	376	329	878	702	585	502	439
PAC-SBHS-28-75-42	42.0	23.0	14.24	427	342	285	244	214	641	513	427	366	320	854	684	570	488	427
PAC-SBHS-28-75-43	43.0	23.5	13.87	416	333	277	238	208	624	499	416	357	312	832	666	555	475	416
PAC-SBHS-28-75-44	44.0	24.0	13.51	405	324	270	232	203	608	486	405	347	304	811	649	540	463	405
PAC-SBHS-28-75-45	45.0	24.5	13.18	395	316	264	226	198	593	474	395	339	296	791	632	527	452	395
PAC-SBHS-28-75-46	46.0	25.0	12.86	386	309	257	220	193	578	463	386	331	289	771	617	514	441	386
PAC-SBHS-28-75-47	47.0	25.5	12.55	376	301	251	215	188	565	452	376	323	282	753	602	502	430	376
PAC-SBHS-28-75-48	48.0	26.1	12.26	368	294	245	210	184	552	441	368	315	276	736	588	490	420	368
PAC-SBHS-28-75-49	49.0	26.6	11.98	359	288	240	205	180	539	431	359	308	270	719	575	479	411	359
PAC-SBHS-28-75-50	50.0	27.1	11.72	351	281	234	201	176	527	422	351	301	264	703	562	469	402	351
0.875" Active Diameter 28 Spline Sway Bar																		
PAC-SBHS-28-875-30	30.0	21.8	38.55	1157	925	771	661	578	1735	1388	1157	991	867	2313	1851	1542	1322	1157
PAC-SBHS-28-875-31	31.0	22.5	37.09	1113	890	742	636	556	1669	1335	1113	954	835	2226	1781	1484	1272	1113
PAC-SBHS-28-875-32	32.0	23.1	35.74	1072	858	715	613	536	1608	1287	1072	919	804	2144	1716	1430	1225	1072
PAC-SBHS-28-875-33	33.0	23.8	34.48	1034	828	690	591	517	1552	1241	1034	887	776	2069	1655	1379	1182	1034
PAC-SBHS-28-875-34	34.0	24.5	33.31	999	799	666	571	500	1499	1199	999	857	749	1999	1599	1332	1142	999
PAC-SBHS-28-875-35	35.0	25.2	32.21	966	773	644	552	483	1450	1160	966	828	725	1933	1546	1289	1104	966
PAC-SBHS-28-875-36	36.0	25.9	31.19	936	749	624	535	468	1403	1123	936	802	702	1871	1497	1248	1069	936
PAC-SBHS-28-875-37	37.0	26.6	30.23	907	725	605	518	453	1360	1088	907	777	680	1814	1451	1209	1036	907
PAC-SBHS-28-875-38	38.0	27.2	29.32	880	704	586	503	440	1319	1056	880	754	660	1759	1407	1173	1005	880
PAC-SBHS-28-875-39	39.0	27.9	28.47	854	683	569	488	427	1281	1025	854	732	641	1708	1366	1139	976	854
PAC-SBHS-28-875-40	40.0	28.6	27.66	830	664	553	474	415	1245	996	830	711	622	1660	1328	1107	948	830
PAC-SBHS-28-875-41	41.0	29.3	26.90	807	646	538	461	404	1211	969	807	692	605	1614	1291	1076	922	807
PAC-SBHS-28-875-42	42.0	30.0	26.18	786	628	524	449	393	1178	943	786	673	589	1571	1257	1047	898	786
PAC-SBHS-28-875-43	43.0	30.7	25.50	765	612	510	437	383	1148	918	765	656	574	1530	1224	1020	874	765
PAC-SBHS-28-875-44	44.0	31.3	24.86	746	597	497	426	373	1118	895	746	639	559	1491	1193	994	852	746
PAC-SBHS-28-875-45	45.0	32.0	24.24	727	582	485	416	364	1091	873	727	623	545	1454	1164	970	831	727
PAC-SBHS-28-875-46	46.0	32.7	23.65	710	568	473	406	355	1064	852	710	608	532	1419	1135	946	811	710
PAC-SBHS-28-875-47	47.0	33.4	23.10	693	554	462	396	346	1039	831	693	594	520	1386	1109	924	792	693
PAC-SBHS-28-875-48	48.0	34.1	22.56	677	542	451	387	338	1015	812	677	580	508	1354	1083	903	774	677
PAC-SBHS-28-875-49	49.0	34.8	22.06	662	529	441	378	331	993	794	662	567	496	1323	1059	882	756	662
PAC-SBHS-28-875-50	50.0	35.4	21.57	647	518	431	370	324	971	777	647	555	485	1294	1035	863	740	647

Note: For your specific or custom application, go online to www.racingswaybars.com and use our online calculator. Twist is defined as the angular deflection of the sway bar as one wheel moves relative to the other (eg. one at bump vs. the other at droop). Your wheel travel, link arm length, and radius rod length determine the amount of twist you will see. Calculator available online.

28 SPLINE TOMAHAWK™ STEEL SWAY BAR TECHNICAL DATA

Part Number	Overall Length (in)	Weight (lbs)	Stiffness (lb-ft/deg)	30 Degree Twist					45 Degree Twist					60 Degree Twist				
				12" Link Arm Reaction Force (Lbs)	15" Link Arm Reaction Force (Lbs)	18" Link Arm Reaction Force (Lbs)	21" Link Arm Reaction Force (Lbs)	24" Link Arm Reaction Force (Lbs)	12" Link Arm Reaction Force (Lbs)	15" Link Arm Reaction Force (Lbs)	18" Link Arm Reaction Force (Lbs)	21" Link Arm Reaction Force (Lbs)	24" Link Arm Reaction Force (Lbs)	12" Link Arm Reaction Force (Lbs)	15" Link Arm Reaction Force (Lbs)	18" Link Arm Reaction Force (Lbs)	21" Link Arm Reaction Force (Lbs)	24" Link Arm Reaction Force (Lbs)
1.000" Active Diameter 28 Spline Sway Bar																		
PAC-SBHS-28-100-30	30.0	27.4	64.90	1947	1558	1298	1113	974	2921	2337	1947	1669	1460	3894	3115	2596	2225	1947
PAC-SBHS-28-100-31	31.0	28.3	62.48	1874	1499	1250	1071	937	2811	2249	1874	1607	1406	3749	2999	2499	2142	1874
PAC-SBHS-28-100-32	32.0	29.2	60.22	1807	1445	1204	1032	903	2710	2168	1807	1549	1355	3613	2891	2409	2065	1807
PAC-SBHS-28-100-33	33.0	30.1	58.13	1744	1395	1163	997	872	2616	2093	1744	1495	1308	3488	2790	2325	1993	1744
PAC-SBHS-28-100-34	34.0	31.0	56.17	1685	1348	1123	963	843	2528	2022	1685	1444	1264	3370	2696	2247	1926	1685
PAC-SBHS-28-100-35	35.0	31.9	54.35	1630	1304	1087	932	815	2446	1957	1630	1398	1223	3261	2609	2174	1863	1630
PAC-SBHS-28-100-36	36.0	32.8	52.64	1579	1263	1053	902	790	2369	1895	1579	1353	1184	3158	2526	2105	1805	1579
PAC-SBHS-28-100-37	37.0	33.7	51.03	1531	1225	1021	875	765	2296	1837	1531	1312	1148	3062	2449	2041	1750	1531
PAC-SBHS-28-100-38	38.0	34.6	49.52	1485	1188	990	849	743	2228	1783	1485	1273	1114	2971	2377	1981	1698	1485
PAC-SBHS-28-100-39	39.0	35.5	48.09	1443	1154	962	824	721	2164	1731	1443	1237	1082	2885	2308	1924	1649	1443
PAC-SBHS-28-100-40	40.0	36.4	46.74	1402	1122	935	801	701	2103	1683	1402	1202	1052	2805	2244	1870	1603	1402
PAC-SBHS-28-100-41	41.0	37.2	45.47	1364	1091	909	780	682	2046	1637	1364	1169	1023	2728	2183	1819	1559	1364
PAC-SBHS-28-100-42	42.0	38.1	44.27	1328	1062	885	759	664	1992	1594	1328	1138	996	2656	2125	1771	1518	1328
PAC-SBHS-28-100-43	43.0	39.0	43.12	1294	1035	862	739	647	1941	1552	1294	1109	970	2587	2070	1725	1479	1294
PAC-SBHS-28-100-44	44.0	39.9	42.04	1261	1009	841	721	631	1892	1513	1261	1081	946	2522	2018	1682	1441	1261
PAC-SBHS-28-100-45	45.0	40.8	41.01	1230	984	820	703	615	1845	1476	1230	1054	923	2460	1968	1640	1406	1230
PAC-SBHS-28-100-46	46.0	41.7	40.02	1201	961	800	686	600	1801	1441	1201	1029	901	2401	1921	1601	1372	1201
PAC-SBHS-28-100-47	47.0	42.6	39.09	1173	938	782	670	586	1759	1407	1173	1005	879	2345	1876	1564	1340	1173
PAC-SBHS-28-100-48	48.0	43.5	38.19	1146	917	764	655	573	1719	1375	1146	982	859	2292	1833	1528	1310	1146
PAC-SBHS-28-100-49	49.0	44.4	37.34	1120	896	747	640	560	1680	1344	1120	960	840	2240	1792	1494	1280	1120
PAC-SBHS-28-100-50	50.0	45.3	36.52	1096	877	730	626	548	1644	1315	1096	939	822	2191	1753	1461	1252	1096

Note: For your specific or custom application, go online to www.racingswaybars.com and use our online calculator. Twist is defined as the angular deflection of the sway bar as one wheel moves relative to the other (eg. one at bump vs. the other at droop). Your wheel travel, link arm length, and radius rod length determine the amount of twist you will see. Calculator available online.



Erik Miller crowned champion in 2012 King of the Hammer's Race!
Erik used a PAC Racing custom sway bar and suspension springs!

Bushing Length Spine Length

1.50 1.50



35 SPLINE TOMAHAWK™ STEEL SWAY BARS

Part number includes small package of loctite, custom fender washers and ARP flanged head cap screws for the end of the sway bar.

	= In Stock
	= Special Order (2-3 week lead time)

0.875" Active Diameter Bars

Part Number	OAL	Mounting Width	Active Diameter	Bushing Width
PAC-SBHS-35-875-30	30.0	27.0	0.875	1.50
PAC-SBHS-35-875-31	31.0	28.0	0.875	1.50
PAC-SBHS-35-875-32	32.0	29.0	0.875	1.50
PAC-SBHS-35-875-33	33.0	30.0	0.875	1.50
PAC-SBHS-35-875-34	34.0	31.0	0.875	1.50
PAC-SBHS-35-875-35	35.0	32.0	0.875	1.50
PAC-SBHS-35-875-36	36.0	33.0	0.875	1.50
PAC-SBHS-35-875-37	37.0	34.0	0.875	1.50
PAC-SBHS-35-875-38	38.0	35.0	0.875	1.50
PAC-SBHS-35-875-39	39.0	36.0	0.875	1.50
PAC-SBHS-35-875-40	40.0	37.0	0.875	1.50
PAC-SBHS-35-875-41	41.0	38.0	0.875	1.50
PAC-SBHS-35-875-42	42.0	39.0	0.875	1.50
PAC-SBHS-35-875-43	43.0	40.0	0.875	1.50
PAC-SBHS-35-875-44	44.0	41.0	0.875	1.50
PAC-SBHS-35-875-45	45.0	42.0	0.875	1.50
PAC-SBHS-35-875-46	46.0	43.0	0.875	1.50
PAC-SBHS-35-875-47	47.0	44.0	0.875	1.50
PAC-SBHS-35-875-48	48.0	45.0	0.875	1.50
PAC-SBHS-35-875-49	49.0	46.0	0.875	1.50
PAC-SBHS-35-875-50	50.0	47.0	0.875	1.50

1.125" Active Diameter Bars

Part Number	OAL	Mounting Width	Active Diameter	Bushing Width
PAC-SBHS-35-112-30	30.0	27.0	1.00	1.50
PAC-SBHS-35-112-31	31.0	28.0	1.00	1.50
PAC-SBHS-35-112-32	32.0	29.0	1.00	1.50
PAC-SBHS-35-112-33	33.0	30.0	1.00	1.50
PAC-SBHS-35-112-34	34.0	31.0	1.00	1.50
PAC-SBHS-35-112-35	35.0	32.0	1.00	1.50
PAC-SBHS-35-112-36	36.0	33.0	1.00	1.50
PAC-SBHS-35-112-37	37.0	34.0	1.00	1.50
PAC-SBHS-35-112-38	38.0	35.0	1.00	1.50
PAC-SBHS-35-112-39	39.0	36.0	1.00	1.50
PAC-SBHS-35-112-40	40.0	37.0	1.00	1.50
PAC-SBHS-35-112-41	41.0	38.0	1.00	1.50
PAC-SBHS-35-112-42	42.0	39.0	1.00	1.50
PAC-SBHS-35-112-43	43.0	40.0	1.00	1.50
PAC-SBHS-35-112-44	44.0	41.0	1.00	1.50
PAC-SBHS-35-112-45	45.0	42.0	1.00	1.50
PAC-SBHS-35-112-46	46.0	43.0	1.00	1.50
PAC-SBHS-35-112-47	47.0	44.0	1.00	1.50
PAC-SBHS-35-112-48	48.0	45.0	1.00	1.50
PAC-SBHS-35-112-49	49.0	46.0	1.00	1.50
PAC-SBHS-35-112-50	50.0	47.0	1.00	1.50

1.000" Active Diameter Bars

Part Number	OAL	Mounting Width	Active Diameter	Bushing Width
PAC-SBHS-35-100-30	30.0	27.0	1.00	1.50
PAC-SBHS-35-100-31	31.0	28.0	1.00	1.50
PAC-SBHS-35-100-32	32.0	29.0	1.00	1.50
PAC-SBHS-35-100-33	33.0	30.0	1.00	1.50
PAC-SBHS-35-100-34	34.0	31.0	1.00	1.50
PAC-SBHS-35-100-35	35.0	32.0	1.00	1.50
PAC-SBHS-35-100-36	36.0	33.0	1.00	1.50
PAC-SBHS-35-100-37	37.0	34.0	1.00	1.50
PAC-SBHS-35-100-38	38.0	35.0	1.00	1.50
PAC-SBHS-35-100-39	39.0	36.0	1.00	1.50
PAC-SBHS-35-100-40	40.0	37.0	1.00	1.50
PAC-SBHS-35-100-41	41.0	38.0	1.00	1.50
PAC-SBHS-35-100-42	42.0	39.0	1.00	1.50
PAC-SBHS-35-100-43	43.0	40.0	1.00	1.50
PAC-SBHS-35-100-44	44.0	41.0	1.00	1.50
PAC-SBHS-35-100-45	45.0	42.0	1.00	1.50
PAC-SBHS-35-100-46	46.0	43.0	1.00	1.50
PAC-SBHS-35-100-47	47.0	44.0	1.00	1.50
PAC-SBHS-35-100-48	48.0	45.0	1.00	1.50
PAC-SBHS-35-100-49	49.0	46.0	1.00	1.50
PAC-SBHS-35-100-50	50.0	47.0	1.00	1.50

1.250" Active Diameter Bars

Part Number	OAL	Mounting Width	Active Diameter	Bushing Width
PAC-SBHS-35-125-30	30.0	27.0	1.00	1.50
PAC-SBHS-35-125-31	31.0	28.0	1.00	1.50
PAC-SBHS-35-125-32	32.0	29.0	1.00	1.50
PAC-SBHS-35-125-33	33.0	30.0	1.00	1.50
PAC-SBHS-35-125-34	34.0	31.0	1.00	1.50
PAC-SBHS-35-125-35	35.0	32.0	1.00	1.50
PAC-SBHS-35-125-36	36.0	33.0	1.00	1.50
PAC-SBHS-35-125-37	37.0	34.0	1.00	1.50
PAC-SBHS-35-125-38	38.0	35.0	1.00	1.50
PAC-SBHS-35-125-39	39.0	36.0	1.00	1.50
PAC-SBHS-35-125-40	40.0	37.0	1.00	1.50
PAC-SBHS-35-125-41	41.0	38.0	1.00	1.50
PAC-SBHS-35-125-42	42.0	39.0	1.00	1.50
PAC-SBHS-35-125-43	43.0	40.0	1.00	1.50
PAC-SBHS-35-125-44	44.0	41.0	1.00	1.50
PAC-SBHS-35-125-45	45.0	42.0	1.00	1.50
PAC-SBHS-35-125-46	46.0	43.0	1.00	1.50
PAC-SBHS-35-125-47	47.0	44.0	1.00	1.50
PAC-SBHS-35-125-48	48.0	45.0	1.00	1.50
PAC-SBHS-35-125-49	49.0	46.0	1.00	1.50
PAC-SBHS-35-125-50	50.0	47.0	1.00	1.50

35 SPLINE TOMAHAWK™ STEEL SWAY BAR TECHNICAL DATA

Part Number	Overall Length (in)	Weight (lbs)	Stiffness (lb-ft/deg)	30 Degree Twist					45 Degree Twist					60 Degree Twist									
				12" Link Arm Reaction Force (Lbs)	15" Link Arm Reaction Force (Lbs)	18" Link Arm Reaction Force (Lbs)	21" Link Arm Reaction Force (Lbs)	24" Link Arm Reaction Force (Lbs)	12" Link Arm Reaction Force (Lbs)	15" Link Arm Reaction Force (Lbs)	18" Link Arm Reaction Force (Lbs)	21" Link Arm Reaction Force (Lbs)	24" Link Arm Reaction Force (Lbs)	12" Link Arm Reaction Force (Lbs)	15" Link Arm Reaction Force (Lbs)	18" Link Arm Reaction Force (Lbs)	21" Link Arm Reaction Force (Lbs)	24" Link Arm Reaction Force (Lbs)					
1.125" Active Diameter 35 Spline Sway Bar																							
PAC-SBHS-35-112-30	30.0	34.9	105.81	3174	2540	2116	1814	1587	4762	3809	3174	2721	2381	Overstress condition: stress will be greater than yield strength of material									
PAC-SBHS-35-112-31	31.0	36.0	101.79	3054	2443	2036	1745	1527	4581	3664	3054	2617	2290										
PAC-SBHS-35-112-32	32.0	37.1	98.06	2942	2353	1961	1681	1471	4413	3530	2942	2522	2206										
PAC-SBHS-35-112-33	33.0	38.3	94.59	2838	2270	1892	1622	1419	4257	3405	2838	2432	2128	5482	4385	3655	3132	2741					
PAC-SBHS-35-112-34	34.0	39.4	91.36	2741	2193	1827	1566	1370	4111	3289	2741	2349	2056	5301	4241	3534	3029	2650					
PAC-SBHS-35-112-35	35.0	40.5	88.35	2650	2120	1767	1515	1325	3976	3180	2650	2272	1988	5131	4105	3421	2932	2566					
PAC-SBHS-35-112-36	36.0	41.6	85.52	2566	2053	1710	1466	1283	3849	3079	2566	2199	1924	4973	3978	3315	2841	2486					
PAC-SBHS-35-112-37	37.0	42.8	82.88	2486	1989	1658	1421	1243	3729	2984	2486	2131	1865	4823	3859	3215	2756	2412					
PAC-SBHS-35-112-38	38.0	43.9	80.39	2412	1929	1608	1378	1206	3617	2894	2412	2067	1809	4682	3746	3122	2676	2341					
PAC-SBHS-35-112-39	39.0	45.0	78.04	2341	1873	1561	1338	1171	3512	2809	2341	2007	1756	4550	3640	3033	2600	2275					
PAC-SBHS-35-112-40	40.0	46.2	75.83	2275	1820	1517	1300	1137	3412	2730	2275	1950	1706	4424	3540	2950	2528	2212					
PAC-SBHS-35-112-41	41.0	47.3	73.74	2212	1770	1475	1264	1106	3318	2655	2212	1896	1659	4306	3445	2871	2460	2153					
PAC-SBHS-35-112-42	42.0	48.4	71.76	2153	1722	1435	1230	1076	3229	2583	2153	1845	1615	4193	3355	2796	2396	2097					
PAC-SBHS-35-112-43	43.0	49.5	69.89	2097	1677	1398	1198	1048	3145	2516	2097	1797	1572	4087	3269	2724	2335	2043					
PAC-SBHS-35-112-44	44.0	50.7	68.11	2043	1635	1362	1168	1022	3065	2452	2043	1751	1532	3985	3188	2657	2277	1993					
PAC-SBHS-35-112-45	45.0	51.8	66.42	1993	1594	1328	1139	996	2989	2391	1993	1708	1494	3889	3111	2592	2222	1944					
PAC-SBHS-35-112-46	46.0	52.9	64.81	1944	1555	1296	1111	972	2916	2333	1944	1667	1458	3797	3037	2531	2170	1898					
PAC-SBHS-35-112-47	47.0	54.1	63.28	1898	1519	1266	1085	949	2848	2278	1898	1627	1424	3709	2967	2473	2119	1854					
PAC-SBHS-35-112-48	48.0	55.2	61.82	1854	1484	1236	1060	927	2782	2225	1854	1590	1391	3625	2900	2417	2072	1813					
PAC-SBHS-35-112-49	49.0	56.3	60.42	1813	1450	1208	1036	906	2719	2175	1813	1554	1359	3545	2836	2363	2026	1773					
PAC-SBHS-35-112-50	50.0	57.4	59.09	1773	1418	1182	1013	886	2659	2127	1773	1519	1329	Overstress condition: stress will be greater than yield strength of material									
1.250" Active Diameter 35 Spline Sway Bar																							
PAC-SBHS-35-125-30	30.0	42.0	159.26	4778	3822	3185	2730	2389	7167	5733	4778	4095	3583										
PAC-SBHS-35-125-31	31.0	43.4	153.28	4598	3679	3066	2628	2299	6897	5518	4598	3941	3449										
PAC-SBHS-35-125-32	32.0	44.8	147.73	4432	3545	2955	2532	2216	6648	5318	4432	3799	3324										
PAC-SBHS-35-125-33	33.0	46.2	142.56	4277	3421	2851	2444	2138	6415	5132	4277	3666	3208										
PAC-SBHS-35-125-34	34.0	47.6	137.75	4132	3306	2755	2361	2066	6199	4959	4132	3542	3099										
PAC-SBHS-35-125-35	35.0	49.0	133.25	3997	3198	2665	2284	1999	5996	4797	3997	3426	2998										
PAC-SBHS-35-125-36	36.0	50.4	129.03	3871	3097	2581	2212	1935	5806	4645	3871	3318	2903										
PAC-SBHS-35-125-37	37.0	51.8	125.08	3752	3002	2502	2144	1876	5628	4503	3752	3216	2814										
PAC-SBHS-35-125-38	38.0	53.2	121.35	3641	2912	2427	2080	1820	5461	4369	3641	3121	2730	7281	5825	4854	4161	3641					
PAC-SBHS-35-125-39	39.0	54.6	117.85	3535	2828	2357	2020	1768	5303	4243	3535	3030	2652	7071	5657	4714	4040	3535					
PAC-SBHS-35-125-40	40.0	55.9	114.54	3436	2749	2291	1964	1718	5154	4123	3436	2945	2577	6872	5498	4582	3927	3436					
PAC-SBHS-35-125-41	41.0	57.3	111.41	3342	2674	2228	1910	1671	5013	4011	3342	2865	2507	6685	5348	4456	3820	3342					
PAC-SBHS-35-125-42	42.0	58.7	108.45	3253	2603	2169	1859	1627	4880	3904	3253	2789	2440	6507	5205	4338	3718	3253					
PAC-SBHS-35-125-43	43.0	60.1	105.64	3169	2535	2113	1811	1585	4754	3803	3169	2716	2377	6338	5071	4226	3622	3169					
PAC-SBHS-35-125-44	44.0	61.5	102.97	3089	2471	2059	1765	1545	4634	3707	3089	2648	2317	6178	4943	4119	3530	3089					
PAC-SBHS-35-125-45	45.0	62.9	100.44	3013	2410	2009	1722	1507	4520	3616	3013	2583	2260	6026	4821	4017	3444	3013					
PAC-SBHS-35-125-46	46.0	64.3	98.02	2941	2353	1960	1680	1470	4411	3529	2941	2521	2205	5881	4705	3921	3361	2941					
PAC-SBHS-35-125-47	47.0	65.7	95.72	2872	2297	1914	1641	1436	4307	3446	2872	2461	2154	5743	4595	3829	3282	2872					
PAC-SBHS-35-125-48	48.0	67.1	93.53	2806	2245	1871	1603	1403	4209	3367	2806	2405	2104	5612	4489	3741	3207	2806					
PAC-SBHS-35-125-49	49.0	68.5	91.43	2743	2194	1829	1567	1371	4114	3291	2743	2351	2057	5486	4389	3657	3135	2743					
PAC-SBHS-35-125-50	50.0	69.9	89.43	2683	2146	1789	1533	1341	4024	3219	2683	2300	2012	5366	4292	3577	3066	2683					

Note: For your specific or custom application, go online to www.racingswaybars.com and use our online calculator. Twist is defined as the angular deflection of the sway bar as one wheel moves relative to the other (eg. one at bump vs. the other at droop). Your wheel travel, link arm length, and radius rod length determine the amount of twist you will see. Calculator available online.

TITANIUM

28 SPLINE TITANIUM SWAY BARS

0.750" Active Diameter Bars

Part Number	OAL	Mounting Width	Active Diameter	Bushing Width
PAC-SBTI-28-75-30	30.0	27.0	0.75	1.50
PAC-SBTI-28-75-31	31.0	28.0	0.75	1.50
PAC-SBTI-28-75-32	32.0	29.0	0.75	1.50
PAC-SBTI-28-75-33	33.0	30.0	0.75	1.50
PAC-SBTI-28-75-34	34.0	31.0	0.75	1.50
PAC-SBTI-28-75-35	35.0	32.0	0.75	1.50
PAC-SBTI-28-75-36	36.0	33.0	0.75	1.50
PAC-SBTI-28-75-37	37.0	34.0	0.75	1.50
PAC-SBTI-28-75-38	38.0	35.0	0.75	1.50
PAC-SBTI-28-75-39	39.0	36.0	0.75	1.50
PAC-SBTI-28-75-40	40.0	37.0	0.75	1.50
PAC-SBTI-28-75-41	41.0	38.0	0.75	1.50
PAC-SBTI-28-75-42	42.0	39.0	0.75	1.50
PAC-SBTI-28-75-43	43.0	40.0	0.75	1.50
PAC-SBTI-28-75-44	44.0	41.0	0.75	1.50
PAC-SBTI-28-75-45	45.0	42.0	0.75	1.50
PAC-SBTI-28-75-46	46.0	43.0	0.75	1.50
PAC-SBTI-28-75-47	47.0	44.0	0.75	1.50
PAC-SBTI-28-75-48	48.0	45.0	0.75	1.50
PAC-SBTI-28-75-49	49.0	46.0	0.75	1.50
PAC-SBTI-28-75-50	50.0	47.0	0.75	1.50

0.875" Active Diameter Bars

Part Number	OAL	Mounting Width	Active Diameter	Bushing Width
PAC-SBTI-28-875-30	30.0	27.0	0.875	1.50
PAC-SBTI-28-875-31	31.0	28.0	0.875	1.50
PAC-SBTI-28-875-32	32.0	29.0	0.875	1.50
PAC-SBTI-28-875-33	33.0	30.0	0.875	1.50
PAC-SBTI-28-875-34	34.0	31.0	0.875	1.50
PAC-SBTI-28-875-35	35.0	32.0	0.875	1.50
PAC-SBTI-28-875-36	36.0	33.0	0.875	1.50
PAC-SBTI-28-875-37	37.0	34.0	0.875	1.50
PAC-SBTI-28-875-38	38.0	35.0	0.875	1.50
PAC-SBTI-28-875-39	39.0	36.0	0.875	1.50
PAC-SBTI-28-875-40	40.0	37.0	0.875	1.50
PAC-SBTI-28-875-41	41.0	38.0	0.875	1.50
PAC-SBTI-28-875-42	42.0	39.0	0.875	1.50
PAC-SBTI-28-875-43	43.0	40.0	0.875	1.50
PAC-SBTI-28-875-44	44.0	41.0	0.875	1.50
PAC-SBTI-28-875-45	45.0	42.0	0.875	1.50
PAC-SBTI-28-875-46	46.0	43.0	0.875	1.50
PAC-SBTI-28-875-47	47.0	44.0	0.875	1.50
PAC-SBTI-28-875-48	48.0	45.0	0.875	1.50
PAC-SBTI-28-875-49	49.0	46.0	0.875	1.50
PAC-SBTI-28-875-50	50.0	47.0	0.875	1.50

SPECIAL ORDER ONLY

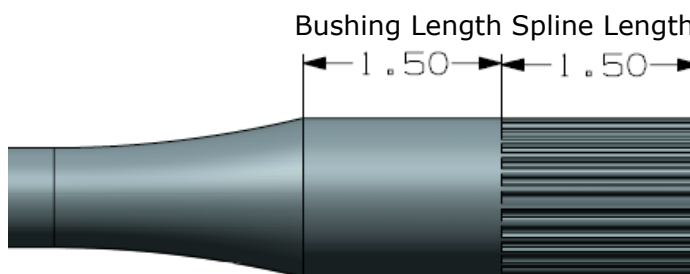
Titanium sway bars available using the highest grade titanium for your high performance application where weight is critical.

Typical weight savings are 7.5 lbs over a steel sway bar.

Part number includes small package of loctite, custom fender washers and ARP cap screws for the end of the sway bar.

1.000" Active Diameter Bars

Part Number	OAL	Mounting Width	Active Diameter	Bushing Width
PAC-SBTI-28-100-30	30.0	27.0	1.00	1.50
PAC-SBTI-28-100-31	31.0	28.0	1.00	1.50
PAC-SBTI-28-100-32	32.0	29.0	1.00	1.50
PAC-SBTI-28-100-33	33.0	30.0	1.00	1.50
PAC-SBTI-28-100-34	34.0	31.0	1.00	1.50
PAC-SBTI-28-100-35	35.0	32.0	1.00	1.50
PAC-SBTI-28-100-36	36.0	33.0	1.00	1.50
PAC-SBTI-28-100-37	37.0	34.0	1.00	1.50
PAC-SBTI-28-100-38	38.0	35.0	1.00	1.50
PAC-SBTI-28-100-39	39.0	36.0	1.00	1.50
PAC-SBTI-28-100-40	40.0	37.0	1.00	1.50
PAC-SBTI-28-100-41	41.0	38.0	1.00	1.50
PAC-SBTI-28-100-42	42.0	39.0	1.00	1.50
PAC-SBTI-28-100-43	43.0	40.0	1.00	1.50
PAC-SBTI-28-100-44	44.0	41.0	1.00	1.50
PAC-SBTI-28-100-45	45.0	42.0	1.00	1.50
PAC-SBTI-28-100-46	46.0	43.0	1.00	1.50
PAC-SBTI-28-100-47	47.0	44.0	1.00	1.50
PAC-SBTI-28-100-48	48.0	45.0	1.00	1.50
PAC-SBTI-28-100-49	49.0	46.0	1.00	1.50
PAC-SBTI-125-100-50	50.0	47.0	1.00	1.50



= In Stock
 = Special Order (2-3 week lead time)

28 SPLINE TITANIUM SWAY BAR TECHNICAL DATA

Part Number	Overall Length (in)	Weight (lbs)	Stiffness (lb-ft/deg)	30 Degree Twist					45 Degree Twist					60 Degree Twist				
				12" Link Arm Reaction Force (Lbs)	15" Link Arm Reaction Force (Lbs)	18" Link Arm Reaction Force (Lbs)	21" Link Arm Reaction Force (Lbs)	24" Link Arm Reaction Force (Lbs)	12" Link Arm Reaction Force (Lbs)	15" Link Arm Reaction Force (Lbs)	18" Link Arm Reaction Force (Lbs)	21" Link Arm Reaction Force (Lbs)	24" Link Arm Reaction Force (Lbs)	12" Link Arm Reaction Force (Lbs)	15" Link Arm Reaction Force (Lbs)	18" Link Arm Reaction Force (Lbs)	21" Link Arm Reaction Force (Lbs)	24" Link Arm Reaction Force (Lbs)
0.750" Active Diameter 28 Spline Titanium Sway Bar																		
PAC-SBTI-28-75-30	30.0	9.8	11.28	338	271	226	193	169	507	406	338	290	254	677	541	451	387	338
PAC-SBTI-28-75-31	31.0	10.1	10.85	325	260	217	186	163	488	390	325	279	244	651	521	434	372	325
PAC-SBTI-28-75-32	32.0	10.3	10.45	313	251	209	179	157	470	376	313	269	235	627	501	418	358	313
PAC-SBTI-28-75-33	33.0	10.6	10.07	302	242	201	173	151	453	363	302	259	227	604	484	403	345	302
PAC-SBTI-28-75-34	34.0	10.9	9.73	292	233	195	167	146	438	350	292	250	219	584	467	389	334	292
PAC-SBTI-28-75-35	35.0	11.2	9.40	282	226	188	161	141	423	339	282	242	212	564	451	376	322	282
PAC-SBTI-28-75-36	36.0	11.5	9.10	273	218	182	156	137	410	328	273	234	205	546	437	364	312	273
PAC-SBTI-28-75-37	37.0	11.8	8.82	265	212	176	151	132	397	317	265	227	198	529	423	353	302	265
PAC-SBTI-28-75-38	38.0	12.1	8.55	257	205	171	147	128	385	308	257	220	192	513	411	342	293	257
PAC-SBTI-28-75-39	39.0	12.4	8.30	249	199	166	142	125	374	299	249	213	187	498	399	332	285	249
PAC-SBTI-28-75-40	40.0	12.6	8.07	242	194	161	138	121	363	290	242	207	181	484	387	323	277	242
PAC-SBTI-28-75-41	41.0	12.9	7.84	235	188	157	134	118	353	282	235	202	176	471	376	314	269	235
PAC-SBTI-28-75-42	42.0	13.2	7.63	229	183	153	131	114	343	275	229	196	172	458	366	305	262	229
PAC-SBTI-28-75-43	43.0	13.5	7.43	223	178	149	127	111	334	268	223	191	167	446	357	297	255	223
PAC-SBTI-28-75-44	44.0	13.8	7.24	217	174	145	124	109	326	261	217	186	163	434	348	290	248	217
PAC-SBTI-28-75-45	45.0	14.1	7.06	212	169	141	121	106	318	254	212	182	159	424	339	282	242	212
PAC-SBTI-28-75-46	46.0	14.4	6.89	207	165	138	118	103	310	248	207	177	155	413	331	276	236	207
PAC-SBTI-28-75-47	47.0	14.7	6.73	202	161	135	115	101	303	242	202	173	151	404	323	269	231	202
PAC-SBTI-28-75-48	48.0	15.0	6.57	197	158	131	113	99	296	237	197	169	148	394	315	263	225	197
PAC-SBTI-28-75-49	49.0	15.2	6.42	193	154	128	110	96	289	231	193	165	144	385	308	257	220	193
PAC-SBTI-28-75-50	50.0	15.5	6.28	188	151	126	108	94	283	226	188	161	141	377	301	251	215	188
0.875" Active Diameter 28 Spline Titanium Sway Bar																		
PAC-SBTI-28-875-30	30.0	12.5	20.66	620	496	413	354	310	930	744	620	531	465	1240	992	826	708	620
PAC-SBTI-28-875-31	31.0	12.9	19.88	596	477	398	341	298	895	716	596	511	447	1193	954	795	682	596
PAC-SBTI-28-875-32	32.0	13.3	19.15	575	460	383	328	287	862	690	575	493	431	1149	919	766	657	575
PAC-SBTI-28-875-33	33.0	13.7	18.48	554	443	370	317	277	832	665	554	475	416	1109	887	739	634	554
PAC-SBTI-28-875-34	34.0	14.1	17.85	536	428	357	306	268	803	643	536	459	402	1071	857	714	612	536
PAC-SBTI-28-875-35	35.0	14.5	17.26	518	414	345	296	259	777	621	518	444	388	1036	829	691	592	518
PAC-SBTI-28-875-36	36.0	14.9	16.71	501	401	334	287	251	752	602	501	430	376	1003	802	669	573	501
PAC-SBTI-28-875-37	37.0	15.2	16.20	486	389	324	278	243	729	583	486	417	364	972	777	648	555	486
PAC-SBTI-28-875-38	38.0	15.6	15.71	471	377	314	269	236	707	566	471	404	354	943	754	629	539	471
PAC-SBTI-28-875-39	39.0	16.0	15.26	458	366	305	262	229	687	549	458	392	343	915	732	610	523	458
PAC-SBTI-28-875-40	40.0	16.4	14.82	445	356	296	254	222	667	534	445	381	334	889	712	593	508	445
PAC-SBTI-28-875-41	41.0	16.8	14.42	433	346	288	247	216	649	519	433	371	324	865	692	577	494	433
PAC-SBTI-28-875-42	42.0	17.2	14.03	421	337	281	241	210	631	505	421	361	316	842	674	561	481	421
PAC-SBTI-28-875-43	43.0	17.6	13.67	410	328	273	234	205	615	492	410	351	308	820	656	547	469	410
PAC-SBTI-28-875-44	44.0	18.0	13.32	400	320	266	228	200	599	480	400	343	300	799	639	533	457	400
PAC-SBTI-28-875-45	45.0	18.4	12.99	390	312	260	223	195	585	468	390	334	292	779	624	520	445	390
PAC-SBTI-28-875-46	46.0	18.8	12.68	380	304	254	217	190	570	456	380	326	285	761	608	507	435	380
PAC-SBTI-28-875-47	47.0	19.2	12.38	371	297	248	212	186	557	446	371	318	278	743	594	495	424	371
PAC-SBTI-28-875-48	48.0	19.6	12.09	363	290	242	207	181	544	435	363	311	272	726	580	484	415	363
PAC-SBTI-28-875-49	49.0	20.0	11.82	355	284	236	203	177	532	426	355	304	266	709	567	473	405	355
PAC-SBTI-28-875-50	50.0	20.3	11.56	347	277	231	198	173	520	416	347	297	260	694	555	462	396	347

Note: For your specific or custom application, go online to www.racingswaybars.com and use our online calculator. Twist is defined as the angular deflection of the sway bar as one wheel moves relative to the other (eg. one at bump vs. the other at droop). Your wheel travel, link arm length, and radius rod length determine the amount of twist you will see. Calculator available online.

28 SPLINE TITANIUM SWAY BAR TECHNICAL DATA

Part Number	Overall Length (in)	Weight (lbs)	Stiffness (lb-ft/deg)	30 Degree Twist					45 Degree Twist					60 Degree Twist				
				12" Link Arm Reaction Force (Lbs)	15" Link Arm Reaction Force (Lbs)	18" Link Arm Reaction Force (Lbs)	21" Link Arm Reaction Force (Lbs)	24" Link Arm Reaction Force (Lbs)	12" Link Arm Reaction Force (Lbs)	15" Link Arm Reaction Force (Lbs)	18" Link Arm Reaction Force (Lbs)	21" Link Arm Reaction Force (Lbs)	24" Link Arm Reaction Force (Lbs)	12" Link Arm Reaction Force (Lbs)	15" Link Arm Reaction Force (Lbs)	18" Link Arm Reaction Force (Lbs)	21" Link Arm Reaction Force (Lbs)	24" Link Arm Reaction Force (Lbs)
1.000" Active Diameter 28 Spline Titanium Sway Bar																		
PAC-SBTI-28-100-30	30.0	15.7	34.78	1043	835	696	596	522	1565	1252	1043	894	783	2087	1670	1391	1193	1043
PAC-SBTI-28-100-31	31.0	16.3	33.48	1004	804	670	574	502	1507	1205	1004	861	753	2009	1607	1339	1148	1004
PAC-SBTI-28-100-32	32.0	16.8	32.27	968	775	645	553	484	1452	1162	968	830	726	1936	1549	1291	1107	968
PAC-SBTI-28-100-33	33.0	17.3	31.15	935	748	623	534	467	1402	1121	935	801	701	1869	1495	1246	1068	935
PAC-SBTI-28-100-34	34.0	17.8	30.10	903	722	602	516	452	1355	1084	903	774	677	1806	1445	1204	1032	903
PAC-SBTI-28-100-35	35.0	18.3	29.12	874	699	582	499	437	1311	1048	874	749	655	1747	1398	1165	999	874
PAC-SBTI-28-100-36	36.0	18.8	28.21	846	677	564	484	423	1269	1015	846	725	635	1692	1354	1128	967	846
PAC-SBTI-28-100-37	37.0	19.3	27.35	820	656	547	469	410	1231	984	820	703	615	1641	1313	1094	938	820
PAC-SBTI-28-100-38	38.0	19.8	26.53	796	637	531	455	398	1194	955	796	682	597	1592	1274	1061	910	796
PAC-SBTI-28-100-39	39.0	20.4	25.77	773	619	515	442	387	1160	928	773	663	580	1546	1237	1031	884	773
PAC-SBTI-28-100-40	40.0	20.9	25.05	752	601	501	429	376	1127	902	752	644	564	1503	1202	1002	859	752
PAC-SBTI-28-100-41	41.0	21.4	24.37	731	585	487	418	366	1097	877	731	627	548	1462	1170	975	835	731
PAC-SBTI-28-100-42	42.0	21.9	23.72	712	569	474	407	356	1068	854	712	610	534	1423	1139	949	813	712
PAC-SBTI-28-100-43	43.0	22.4	23.11	693	555	462	396	347	1040	832	693	594	520	1387	1109	924	792	693
PAC-SBTI-28-100-44	44.0	22.9	22.53	676	541	451	386	338	1014	811	676	579	507	1352	1081	901	772	676
PAC-SBTI-28-100-45	45.0	23.4	21.98	659	527	440	377	330	989	791	659	565	494	1319	1055	879	753	659
PAC-SBTI-28-100-46	46.0	23.9	21.45	643	515	429	368	322	965	772	643	552	483	1287	1030	858	735	643
PAC-SBTI-28-100-47	47.0	24.4	20.95	628	503	419	359	314	943	754	628	539	471	1257	1005	838	718	628
PAC-SBTI-28-100-48	48.0	25.0	20.47	614	491	409	351	307	921	737	614	526	461	1228	982	819	702	614
PAC-SBTI-28-100-49	49.0	25.5	20.01	600	480	400	343	300	900	720	600	515	450	1201	961	800	686	600
PAC-SBTI-28-100-50	50.0	26.0	19.57	587	470	391	336	294	881	705	587	503	440	1174	940	783	671	587

Note: For your specific or custom application, go online to www.racingswaybars.com and use our online calculator. Twist is defined as the angular deflection of the sway bar as one wheel moves relative to the other (eg. one at bump vs. the other at droop). Your wheel travel, link arm length, and radius rod length determine the amount of twist you will see. Calculator available online.



Sway Bar Bushings to Fit Your Application

Mounting

Mounting of your Sway Bar can be done a variety of ways. By far the most popular is mounting inside a chassis tube. We stock all sizes of nylon bushings listed below to press inside commonly used 1.75" and 2" chassis tubes (bushings are sized .002" over the nominal ID of tubing). We offer 4 different shoulder thickness to take up any slack that will result if mounting tube length is not a whole number.

PART NUMBERING

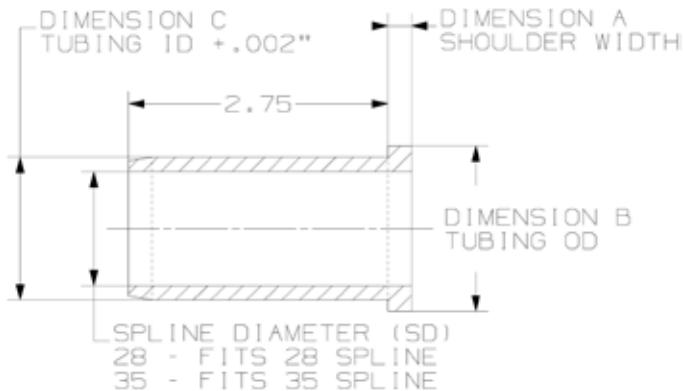
300303-X-SD

Specifies which size tubing the bushing presses inside

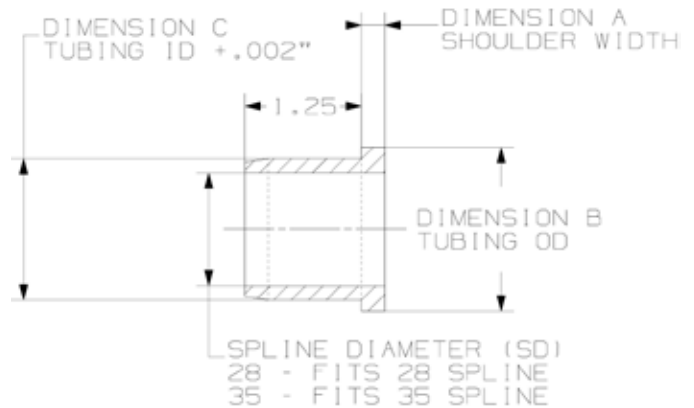
Spline Diameter-
28 - fits a 28 spline sway bar
35 - fits a 35 spline sway bar

ADD A -SC TO THE END OF THE PART NUMBER TO ORDER A SHORT COURSE STYLE BUSHING

Short Course Length Bushing (300302-X-SD-SC)



Standard Length Bushing (300302-X-SD)



0.250" Shoulder Bushing

(for use with mounting tube lengths that are whole numbers, eg. 30", etc.)

Part Number	Dimension A Shoulder Thickness	Dimension B Tubing OD	Dimension C Tubing ID +.002	Tubing Wall Thickness (REF)
For use with 28 spline sway bars only				
PAC-300302-1-28	0.25	1.75	1.622	0.065
PAC-300302-2-28	0.25	1.75	1.586	0.083
PAC-300302-3-28	0.25	1.75	1.562	0.095
PAC-300302-4-28	0.25	1.75	1.534	0.109
PAC-300302-5-28	0.25	1.75	1.512	0.120
PAC-300302-6-28	0.25	1.75	1.502	0.125
PAC-300302-7-28	0.25	1.75	1.484	0.134
For use with both 28 spline and 35 spline sway bars - Please specify when ordering				
PAC-300302-8-SD	0.25	2.00	1.872	0.065
PAC-300302-9-SD	0.25	2.00	1.736	0.083
PAC-300302-10-SD	0.25	2.00	1.812	0.095
PAC-300302-11-SD	0.25	2.00	1.784	0.109
PAC-300302-12-SD	0.25	2.00	1.762	0.120
PAC-300302-13-SD	0.25	2.00	1.752	0.125
PAC-300302-14-SD	0.25	2.00	1.734	0.134

0.375" Shoulder Bushing

(for use with mounting tube lengths that are 0.75" over a whole number, eg. 30.75")

Part Number	Dimension A Shoulder Thickness	Dimension B Tubing OD	Dimension C Tubing ID +.002	Tubing Wall Thickness (REF)
For use with 28 spline sway bars only				
PAC-300303-1-28	0.375	1.75	1.622	0.065
PAC-300303-2-28	0.375	1.75	1.586	0.083
PAC-300303-3-28	0.375	1.75	1.562	0.095
PAC-300303-4-28	0.375	1.75	1.534	0.109
PAC-300303-5-28	0.375	1.75	1.512	0.120
PAC-300303-6-28	0.375	1.75	1.502	0.125
PAC-300303-7-28	0.375	1.75	1.484	0.134
For use with both 28 spline and 35 spline sway bars - Please specify when ordering.				
PAC-300303-8-SD	0.375	2.00	1.872	0.065
PAC-300303-9-SD	0.375	2.00	1.736	0.083
PAC-300303-10-SD	0.375	2.00	1.812	0.095
PAC-300303-11-SD	0.375	2.00	1.784	0.109
PAC-300303-12-SD	0.375	2.00	1.762	0.120
PAC-300303-13-SD	0.375	2.00	1.752	0.125
PAC-300303-14-SD	0.375	2.00	1.734	0.134

Bold type denotes most common tubing size

Bushings (cont.)

0.500" Shoulder Bushing

(for use with mounting tube lengths that are 0.50" over a whole number, eg. 30.50")

Part Number	Dimension A Shoulder Thickness	Dimension B Tubing OD	Dimension C Tubing ID +.002	Tubing Wall Thickness (REF)
For use with 28 spline sway bars only				
PAC-300304-1-28	0.500	1.75	1.622	0.065
PAC-300304-2-28	0.500	1.75	1.586	0.083
PAC-300304-3-28	0.500	1.75	1.562	0.095
PAC-300304-4-28	0.500	1.75	1.534	0.109
PAC-300304-5-28	0.500	1.75	1.512	0.120
PAC-300304-6-28	0.500	1.75	1.502	0.125
300304-7-28	0.500	1.75	1.484	0.134
For use with both 28 spline and 35 spline sway bars - Please specify when ordering.				
PAC-300304-8-SD	0.500	2.00	1.872	0.065
PAC-300304-9-SD	0.500	2.00	1.736	0.083
PAC-300304-10-SD	0.500	2.00	1.812	0.095
PAC-300304-11-SD	0.500	2.00	1.784	0.109
PAC-300304-12-SD	0.500	2.00	1.762	0.120
PAC-300304-13-SD	0.500	2.00	1.752	0.125
PAC-300304-14-SD	0.500	2.00	1.734	0.134

0.625" Shoulder Bushing

(for use with mounting tube lengths that are 0.25" over a whole number, eg. 30.25")

Part Number	Dimension A Shoulder Thickness	Dimension B Tubing OD	Dimension C Tubing ID +.002	Tubing Wall Thickness (REF)
For use with 28 spline sway bars only				
PAC-300305-1-28	0.625	1.75	1.622	0.065
PAC-300305-2-28	0.625	1.75	1.586	0.083
PAC-300305-3-28	0.625	1.75	1.562	0.095
PAC-300305-4-28	0.625	1.75	1.534	0.109
PAC-300305-5-28	0.625	1.75	1.512	0.120
PAC-300305-6-28	0.625	1.75	1.502	0.125
PAC-300305-7-28	0.625	1.75	1.484	0.134
For use with both 28 spline and 35 spline sway bars - Please specify when ordering.				
PAC-300305-8-SD	0.625	2.00	1.872	0.065
PAC-300305-9-SD	0.625	2.00	1.736	0.083
PAC-300305-10-SD	0.625	2.00	1.812	0.095
PAC-300305-11-SD	0.625	2.00	1.784	0.109
PAC-300305-12-SD	0.625	2.00	1.762	0.120
PAC-300305-13-SD	0.625	2.00	1.752	0.125
PAC-300305-14-SD	0.625	2.00	1.734	0.134

Bold type denotes most common tubing size



300302-5-28



300302-12-28



Bushing installed on sway bar

Axle Mounting Tabs

Mounting your radius rods to an axle is easy with our stamped axle mounting tabs. We stock sizes to fit 3", 3.5", and 4" axle housings. Custom sizes and designs available.

Part Number	Axle Housing OD	Mounting Hole
PAC-300266-3	3.0"	0.50"
PAC-300266-3.5	3.5"	0.50"
PAC-300266-4	4.0"	0.50"



PAC-300266-3



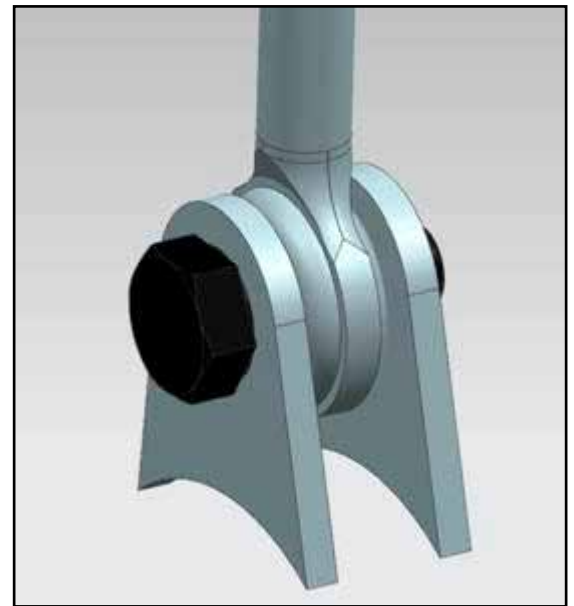
PAC-300266-3.5



PAC-300266-4



Tyree Motorsports runs PAC Racing suspension springs and sway bars!



We highly recommend mounting the rod end in a double shear method (shown above). This prevents side loading and potential buckling of the radius rod under load.

Short Course Sway Bars

We have designed sway bars specific to your application as a short course racer!

A longer bushing length (3") helps with the wider mounting points specific to your chassis

Titanium Sway Bars are also available, simply substitute TI for HS in the part number! We can also bend our link arms to give you clearance around any suspension components as necessary. See the custom order form at the end of the catalog for all necessary details.

Part number includes small package of loctite, custom fender washers and ARP flanged head cap screws for the end of the sway bar.



28 Spline Tomahawk™ Steel Sway Bars

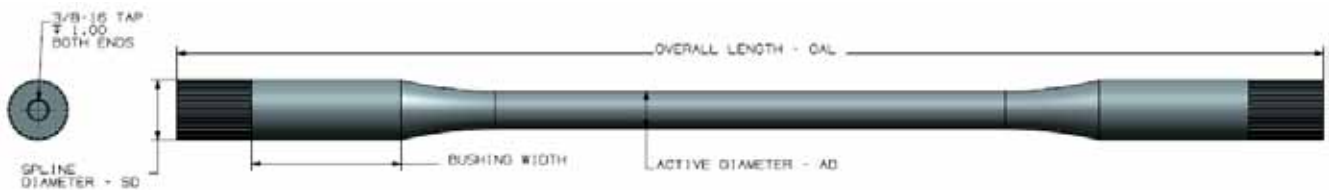
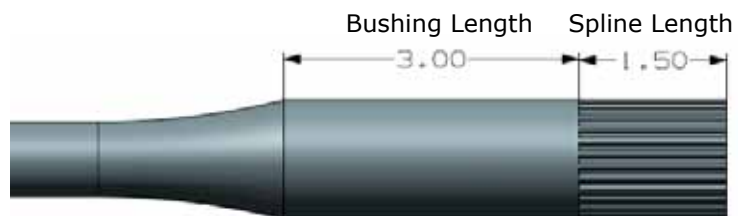
Part Number (for Titanium, substitute TI for HS)	OAL	Mounting Width	Active Diameter	Bushing Width
0.750" Active Diameter Bars				
PAC-SBHS-SC28-75-40	40.0	37.0	0.75	3.00
PAC-SBHS-SC28-75-41	41.0	38.0	0.75	3.00
PAC-SBHS-SC28-75-42	42.0	39.0	0.75	3.00
PAC-SBHS-SC28-75-43	43.0	40.0	0.75	3.00
PAC-SBHS-SC28-75-44	44.0	41.0	0.75	3.00
PAC-SBHS-SC28-75-45	45.0	42.0	0.75	3.00
PAC-SBHS-SC28-75-46	46.0	43.0	0.75	3.00
PAC-SBHS-SC28-75-47	47.0	44.0	0.75	3.00
PAC-SBHS-SC28-75-48	48.0	45.0	0.75	3.00
PAC-SBHS-SC28-75-49	49.0	46.0	0.75	3.00
PAC-SBHS-SC28-75-50	50.0	47.0	0.75	3.00
0.875" Active Diameter Bars				
PAC-SBHS-SC28-875-40	40.0	37.0	0.875	3.00
PAC-SBHS-SC28-875-41	41.0	38.0	0.875	3.00
PAC-SBHS-SC28-875-42	42.0	39.0	0.875	3.00
PAC-SBHS-SC28-875-43	43.0	40.0	0.875	3.00
PAC-SBHS-SC28-875-44	44.0	41.0	0.875	3.00
PAC-SBHS-SC28-875-45	45.0	42.0	0.875	3.00
PAC-SBHS-SC28-875-46	46.0	43.0	0.875	3.00
PAC-SBHS-SC28-875-47	47.0	44.0	0.875	3.00
PAC-SBHS-SC28-875-48	48.0	45.0	0.875	3.00
PAC-SBHS-SC28-875-49	49.0	46.0	0.875	3.00
PAC-SBHS-SC28-875-50	50.0	47.0	0.875	3.00

Note: Part numbers have an SC added to denote short course style

Part Number (for Titanium, substitute TI for HS)	OAL	Mounting Width	Active Diameter	Bushing Width
1.000" Active Diameter Bars				
PAC-SBHS-SC28-100-40	40.0	37.0	1.00	3.00
PAC-SBHS-SC28-100-41	41.0	38.0	1.00	3.00
PAC-SBHS-SC28-100-42	42.0	39.0	1.00	3.00
PAC-SBHS-SC28-100-43	43.0	40.0	1.00	3.00
PAC-SBHS-SC28-100-44	44.0	41.0	1.00	3.00
PAC-SBHS-SC28-100-45	45.0	42.0	1.00	3.00
PAC-SBHS-SC28-100-46	46.0	43.0	1.00	3.00
PAC-SBHS-SC28-100-47	47.0	44.0	1.00	3.00
PAC-SBHS-SC28-100-48	48.0	45.0	1.00	3.00
PAC-SBHS-SC28-100-49	49.0	46.0	1.00	3.00
PAC-SBHS-SC28-100-50	50.0	47.0	1.00	3.00

Note: Part numbers have an SC added to denote short course style

 = In Stock  = Special Order (2-3 week lead time)



Bushings

For bushings that match the longer bushing width of the short course sway bars, add a -SC to the end of the bushing part numbers listed on page 13.



PAC Racing selected the highest quality hardware available for the bolts in the end of the sway bar. ARP has years of racing experience to get you to the finish line!

Short Course Sway Bars

35 Spline Tomahawk™ Steel Sway Bars

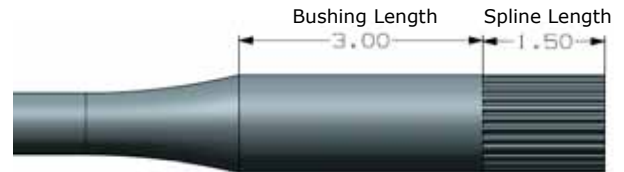
Part Number (for Titanium, substitute TI for HS)	OAL	Mounting Width	Active Diameter	Bushing Width
0.875" Active Diameter Bars				
PAC-SBHS-SC35-875-40	40.0	37.0	0.875	3.00
PAC-SBHS-SC35-875-41	41.0	38.0	0.875	3.00
PAC-SBHS-SC35-875-42	42.0	39.0	0.875	3.00
PAC-SBHS-SC35-875-43	43.0	40.0	0.875	3.00
PAC-SBHS-SC35-875-44	44.0	41.0	0.875	3.00
PAC-SBHS-SC35-875-45	45.0	42.0	0.875	3.00
PAC-SBHS-SC35-875-46	46.0	43.0	0.875	3.00
PAC-SBHS-SC35-875-47	47.0	44.0	0.875	3.00
PAC-SBHS-SC35-875-48	48.0	45.0	0.875	3.00
PAC-SBHS-SC35-875-49	49.0	46.0	0.875	3.00
PAC-SBHS-SC35-875-50	50.0	47.0	0.875	3.00
1.000" Active Diameter Bars				
PAC-SBHS-SC35-100-40	40.0	37.0	1.00	3.00
PAC-SBHS-SC35-100-41	41.0	38.0	1.00	3.00
PAC-SBHS-SC35-100-42	42.0	39.0	1.00	3.00
PAC-SBHS-SC35-100-43	43.0	40.0	1.00	3.00
PAC-SBHS-SC35-100-44	44.0	41.0	1.00	3.00
PAC-SBHS-SC35-100-45	45.0	42.0	1.00	3.00
PAC-SBHS-SC35-100-46	46.0	43.0	1.00	3.00
PAC-SBHS-SC35-100-47	47.0	44.0	1.00	3.00
PAC-SBHS-SC35-100-48	48.0	45.0	1.00	3.00
PAC-SBHS-SC35-100-49	49.0	46.0	1.00	3.00
PAC-SBHS-SC35-100-50	50.0	47.0	1.00	3.00

Note: Part numbers have an SC added to denote short course style

Part Number (for Titanium, substitute TI for HS)	OAL	Mounting Width	Active Diameter	Bushing Width
1.125" Active Diameter Bars				
PAC-SBHS-SC35-1125-40	40.0	37.0	1.125	3.00
PAC-SBHS-SC35-1125-41	41.0	38.0	1.125	3.00
PAC-SBHS-SC35-1125-42	42.0	39.0	1.125	3.00
PAC-SBHS-SC35-1125-43	43.0	40.0	1.125	3.00
PAC-SBHS-SC35-1125-44	44.0	41.0	1.125	3.00
PAC-SBHS-SC35-1125-45	45.0	42.0	1.125	3.00
PAC-SBHS-SC35-1125-46	46.0	43.0	1.125	3.00
PAC-SBHS-SC35-1125-47	47.0	44.0	1.125	3.00
PAC-SBHS-SC35-1125-48	48.0	45.0	1.125	3.00
PAC-SBHS-SC35-1125-49	49.0	46.0	1.125	3.00
PAC-SBHS-SC35-1125-50	50.0	47.0	1.125	3.00
1.250" Active Diameter Bars				
PAC-SBHS-SC35-125-40	40.0	37.0	1.25	3.00
PAC-SBHS-SC35-125-41	41.0	38.0	1.25	3.00
PAC-SBHS-SC35-125-42	42.0	39.0	1.25	3.00
PAC-SBHS-SC35-125-43	43.0	40.0	1.25	3.00
PAC-SBHS-SC35-125-44	44.0	41.0	1.25	3.00
PAC-SBHS-SC35-125-45	45.0	42.0	1.25	3.00
PAC-SBHS-SC35-125-46	46.0	43.0	1.25	3.00
PAC-SBHS-SC35-125-47	47.0	44.0	1.25	3.00
PAC-SBHS-SC35-125-48	48.0	45.0	1.25	3.00
PAC-SBHS-SC35-125-49	49.0	46.0	1.25	3.00
PAC-SBHS-SC35-125-50	50.0	47.0	1.25	3.00

Note: Part numbers have an SC added to denote short course style

= In Stock = Special Order (2-3 week lead time)



Short Course Sway Bar Technical Data

Part Number	Overall Length (in)	Weight (lbs)	Stiffness (lb-ft/deg)	30 Degree Twist					45 Degree Twist					60 Degree Twist					
				12" Link Arm Reaction Force (Lbs)	15" Link Arm Reaction Force (Lbs)	18" Link Arm Reaction Force (Lbs)	21" Link Arm Reaction Force (Lbs)	24" Link Arm Reaction Force (Lbs)	12" Link Arm Reaction Force (Lbs)	15" Link Arm Reaction Force (Lbs)	18" Link Arm Reaction Force (Lbs)	21" Link Arm Reaction Force (Lbs)	24" Link Arm Reaction Force (Lbs)	12" Link Arm Reaction Force (Lbs)	15" Link Arm Reaction Force (Lbs)	18" Link Arm Reaction Force (Lbs)	21" Link Arm Reaction Force (Lbs)	24" Link Arm Reaction Force (Lbs)	
0.750" Active Diameter Steel Short Course Sway Bar																			
PAC-SBHS-SC28-750-40	40.0	23.1	15.72	472	377	314	270	236	708	566	472	404	354	943	755	629	539	472	
PAC-SBHS-SC28-750-41	41.0	23.6	15.27	458	366	305	262	229	687	550	458	393	344	916	733	611	523	458	
PAC-SBHS-SC28-750-42	42.0	24.1	14.84	445	356	297	254	223	668	534	445	382	334	890	712	594	509	445	
PAC-SBHS-SC28-750-43	43.0	24.6	14.43	433	346	289	247	217	650	520	433	371	325	866	693	577	495	433	
PAC-SBHS-SC28-750-44	44.0	25.1	14.05	422	337	281	241	211	632	506	422	361	316	843	674	562	482	422	
PAC-SBHS-SC28-750-45	45.0	25.6	13.69	411	328	274	235	205	616	493	411	352	308	821	657	547	469	411	
PAC-SBHS-SC28-750-46	46.0	26.1	13.34	400	320	267	229	200	600	480	400	343	300	801	640	534	457	400	
PAC-SBHS-SC28-750-47	47.0	26.6	13.01	390	312	260	223	195	586	468	390	335	293	781	625	521	446	390	
PAC-SBHS-SC28-750-48	48.0	27.1	12.70	381	305	254	218	191	572	457	381	327	286	762	610	508	435	381	
PAC-SBHS-SC28-750-49	49.0	27.6	12.40	372	298	248	213	186	558	446	372	319	279	744	595	496	425	372	
PAC-SBHS-SC28-750-50	50.0	28.1	12.12	364	291	242	208	182	545	436	364	312	273	727	582	485	415	364	

SHORT COURSE TOMAHAWK™ STEEL SWAY BAR TECHNICAL DATA (CONT.)

Part Number	Overall Length (in)	Weight (lbs)	Stiffness (lb-ft/deg)	30 Degree Twist					45 Degree Twist					60 Degree Twist				
				12" Link Arm Reaction Force (Lbs)	15" Link Arm Reaction Force (Lbs)	18" Link Arm Reaction Force (Lbs)	21" Link Arm Reaction Force (Lbs)	24" Link Arm Reaction Force (Lbs)	12" Link Arm Reaction Force (Lbs)	15" Link Arm Reaction Force (Lbs)	18" Link Arm Reaction Force (Lbs)	21" Link Arm Reaction Force (Lbs)	24" Link Arm Reaction Force (Lbs)	12" Link Arm Reaction Force (Lbs)	15" Link Arm Reaction Force (Lbs)	18" Link Arm Reaction Force (Lbs)	21" Link Arm Reaction Force (Lbs)	24" Link Arm Reaction Force (Lbs)
.875" Active Diameter Steel Short Course Sway Bar																		
PAC-SBHS-SC28-875-40	40.0	29.4	28.89	867	693	578	495	433	1300	1040	867	743	650	1733	1387	1156	990	867
PAC-SBHS-SC28-875-41	41.0	30.1	28.06	842	673	561	481	421	1263	1010	842	722	631	1684	1347	1122	962	842
PAC-SBHS-SC28-875-42	42.0	30.7	27.28	818	655	546	468	409	1228	982	818	701	614	1637	1309	1091	935	818
PAC-SBHS-SC28-875-43	43.0	31.4	26.54	796	637	531	455	398	1194	955	796	682	597	1592	1274	1062	910	796
PAC-SBHS-SC28-875-44	44.0	32.1	25.84	775	620	517	443	388	1163	930	775	664	581	1550	1240	1034	886	775
PAC-SBHS-SC28-875-45	45.0	32.8	25.17	755	604	503	432	378	1133	906	755	647	566	1510	1208	1007	863	755
PAC-SBHS-SC28-875-46	46.0	33.5	24.54	736	589	491	421	368	1104	884	736	631	552	1473	1178	982	842	736
PAC-SBHS-SC28-875-47	47.0	34.2	23.94	718	575	479	410	359	1077	862	718	616	539	1437	1149	958	821	718
PAC-SBHS-SC28-875-48	48.0	34.8	23.37	701	561	467	401	351	1052	841	701	601	526	1402	1122	935	801	701
PAC-SBHS-SC28-875-49	49.0	35.5	22.83	685	548	457	391	342	1027	822	685	587	514	1370	1096	913	783	685
PAC-SBHS-SC28-875-50	50.0	36.2	22.31	669	535	446	382	335	1004	803	669	574	502	1338	1071	892	765	669
1.000" Active Diameter Steel Short Course Sway Bar																		
PAC-SBHS-SC28-100-40	40.0	36.8	48.79	1464	1171	976	836	732	2196	1757	1464	1255	1098	2928	2342	1952	1673	1464
PAC-SBHS-SC28-100-41	41.0	37.7	47.41	1422	1138	948	813	711	2133	1707	1422	1219	1067	2844	2276	1896	1625	1422
PAC-SBHS-SC28-100-42	42.0	38.6	46.10	1383	1106	922	790	691	2074	1660	1383	1185	1037	2766	2213	1844	1581	1383
PAC-SBHS-SC28-100-43	43.0	39.5	44.86	1346	1077	897	769	673	2019	1615	1346	1154	1009	2692	2153	1794	1538	1346
PAC-SBHS-SC28-100-44	44.0	40.3	43.69	1311	1049	874	749	655	1966	1573	1311	1123	983	2621	2097	1748	1498	1311
PAC-SBHS-SC28-100-45	45.0	41.2	42.57	1277	1022	851	730	639	1916	1533	1277	1095	958	2554	2044	1703	1460	1277
PAC-SBHS-SC28-100-46	46.0	42.1	41.52	1246	996	830	712	623	1868	1495	1246	1068	934	2491	1993	1661	1423	1246
PAC-SBHS-SC28-100-47	47.0	43.0	40.51	1215	972	810	694	608	1823	1458	1215	1042	911	2431	1944	1620	1389	1215
PAC-SBHS-SC28-100-48	48.0	43.9	39.55	1187	949	791	678	593	1780	1424	1187	1017	890	2373	1898	1582	1356	1187
PAC-SBHS-SC28-100-49	49.0	44.8	38.64	1159	927	773	662	580	1739	1391	1159	994	869	2318	1855	1545	1325	1159
PAC-SBHS-SC28-100-50	50.0	45.7	37.76	1133	906	755	647	566	1699	1359	1133	971	850	2266	1813	1511	1295	1133
1.125" Active Diameter Steel Short Course Sway Bar																		
PAC-SBHS-SC35-112-40	40.0	47.1	77.80	2334	1867	1556	1334	1167	3501	2801	2334	2001	1750	4668	3734	3112	2667	2334
PAC-SBHS-SC35-112-41	41.0	48.2	75.56	2267	1813	1511	1295	1133	3400	2720	2267	1943	1700	4534	3627	3022	2591	2267
PAC-SBHS-SC35-112-42	42.0	49.3	73.45	2204	1763	1469	1259	1102	3305	2644	2204	1889	1653	4407	3526	2938	2518	2204
PAC-SBHS-SC35-112-43	43.0	50.5	71.45	2144	1715	1429	1225	1072	3215	2572	2144	1837	1608	4287	3430	2858	2450	2144
PAC-SBHS-SC35-112-44	44.0	51.6	69.56	2087	1670	1391	1193	1043	3130	2504	2087	1789	1565	4174	3339	2783	2385	2087
PAC-SBHS-SC35-112-45	45.0	52.7	67.77	2033	1626	1355	1162	1017	3050	2440	2033	1743	1525	4066	3253	2711	2324	2033
PAC-SBHS-SC35-112-46	46.0	53.8	66.07	1982	1586	1321	1133	991	2973	2378	1982	1699	1486	3964	3171	2643	2265	1982
PAC-SBHS-SC35-112-47	47.0	54.9	64.45	1933	1547	1289	1105	967	2900	2320	1933	1657	1450	3867	3093	2578	2210	1933
PAC-SBHS-SC35-112-48	48.0	56.1	62.90	1887	1510	1258	1078	944	2831	2265	1887	1618	1415	3774	3019	2516	2157	1887
PAC-SBHS-SC35-112-49	49.0	57.2	61.43	1843	1474	1229	1053	922	2765	2212	1843	1580	1382	3686	2949	2457	2106	1843
PAC-SBHS-SC35-112-50	50.0	58.3	60.03	1801	1441	1201	1029	900	2701	2161	1801	1544	1351	3602	2882	2401	2058	1801
1.250" Active Diameter Steel Short Course Sway Bar																		
PAC-SBHS-SC35-125-40	40.0	56.8	119.57	3587	2870	2391	2050	1794	5381	4305	3587	3075	2690	7174	5740	4783	4100	3587
PAC-SBHS-SC35-125-41	41.0	58.2	116.17	3485	2788	2323	1991	1743	5228	4182	3485	2987	2614	6970	5576	4647	3983	3485
PAC-SBHS-SC35-125-42	42.0	59.6	112.95	3389	2711	2259	1936	1694	5083	4066	3389	2904	2541	6777	5422	4518	3873	3389
PAC-SBHS-SC35-125-43	43.0	61.0	109.91	3297	2638	2198	1884	1649	4946	3957	3297	2826	2473	6595	5276	4396	3768	3297
PAC-SBHS-SC35-125-44	44.0	62.4	107.02	3211	2569	2140	1835	1605	4816	3853	3211	2752	2408	6421	5137	4281	3669	3211
PAC-SBHS-SC35-125-45	45.0	63.8	104.29	3129	2503	2086	1788	1564	4693	3754	3129	2682	2346	6257	5006	4172	3576	3129
PAC-SBHS-SC35-125-46	46.0	65.2	101.69	3051	2441	2034	1743	1525	4576	3661	3051	2615	2288	6101	4881	4068	3486	3051
PAC-SBHS-SC35-125-47	47.0	66.6	99.21	2976	2381	1984	1701	1488	4465	3572	2976	2551	2232	5953	4762	3969	3402	2976
PAC-SBHS-SC35-125-48	48.0	68.0	96.86	2906	2325	1937	1660	1453	4359	3487	2906	2491	2179	5811	4649	3874	3321	2906
PAC-SBHS-SC35-125-49	49.0	69.4	94.61	2838	2271	1892	1622	1419	4258	3406	2838	2433	2129	5677	4541	3784	3244	2838
PAC-SBHS-SC35-125-50	50.0	70.8	92.47	2774	2219	1849	1585	1387	4161	3329	2774	2378	2080	5548	4438	3699	3170	2774

Link Arm Styles

Link arm design is highly dependent on your application. Too long of an arm and you will greatly reduce the force realized from angular twist in the sway bar. Too short of an arm and you may end up too stiff for your suspension or have binding issues at full bump or full droop. Flexibility in design for the racer is something we at PAC Racing pride ourselves on, so that once you get up and running, you can tweak and tune to perfection with our highly customizable link arm line.

ALL LINK ARM SYLES IN STOCK!

<p>High Strength Racing 100 Series Double Shear Arms</p>  <p>Fully Machined - No Hassle Premium Performance (page 22)</p>  <p>Machined Blanks - Performance and Flexibility (page 23)</p>  <p>Clevis - Double Shear for Double the Reliability (page 24)</p>  <p>ALA Armor - Protection for the Roughest Applications (page 24)</p>	<p>Sportsman Offroad 200 Series Inserts and Link Arms</p>  <p>Bolted Link Arm Inserts - Balance of Flexibility and Cost (page 25)</p>  <p>200 Series Arms - Reliable Yet Cost Effective (page 25)</p>  <p>PAC Racing selected the highest quality hardware available for the bolted joints in the link arm assembly. ARP has years of racing experience to get you to the finish line!</p>
---	---

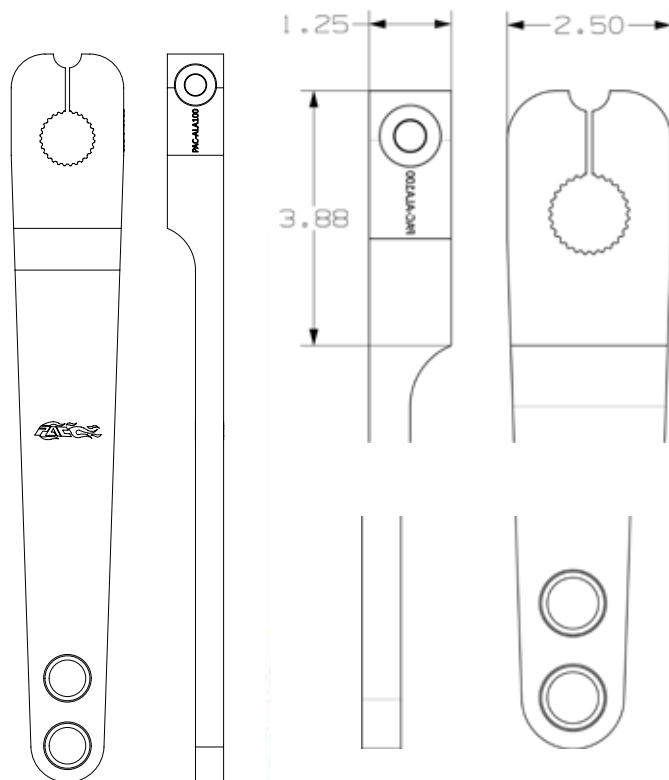
<p>Pro Fabricator 300 Series Pro Fabricator Inserts and Arms</p>  <p>Round Weld Insert - Flexibility and Strength (page 26)</p>  <p>300 Series Arms - Custom Arms Welded Arms Made Easy (page 27)</p>	 <p>Complete Link Arm Kit Available! (See pages 26-27)</p>
--	--

High Strength Racing Link Arms

100 Series Double Shear Arms

Most manufacturers use a bolt in single shear at the end connection, but our aluminum arms use a spherical bearing (FK Rod Ends) and can be purchased with a high strength clevis (page 24) to bolt directly to the radius rod. The design was driven by stress analysis, and will meet the needs of most applications. All arms come engraved with part number near the splines and PAC Flame logo on each side.

Part Number	Length Range	Spline Count	Material
Part Number includes spherical bearing and retaining ring. Also includes a premium ARP 7/16" bolt and ARP locknut to clamp down on the splines			
Aluminum			
PAC-ALA100	12, 13.5	28	6061-T6, Anodized Black
PAC-ALA101	15, 16.5	28	6061-T6, Anodized Black
PAC-ALA102	18, 19.5	28	6061-T6, Anodized Black
PAC-ALA103	21, 22.5	28	6061-T6, Anodized Black
PAC-ALA104	24, 25.5	28	6061-T6, Anodized Black
PAC-ALA110	12, 13.5	35	6061-T6, Anodized Black
PAC-ALA111	15, 16.5	35	6061-T6, Anodized Black
PAC-ALA112	18, 19.5	35	6061-T6, Anodized Black
PAC-ALA113	21, 22.5	35	6061-T6, Anodized Black
PAC-ALA114	24, 25.5	35	6061-T6, Anodized Black
Any of these arms can be upgraded to 7075 aluminum, call for pricing			
Steel			
PAC-SLA100	12, 13.5	28	1018 Steel, Pocketed Body
PAC-SLA101	15, 16.5	28	1018 Steel, Pocketed Body
PAC-SLA102	18, 19.5	28	1018 Steel, Pocketed Body
PAC-SLA103	21, 22.5	28	1018 Steel, Pocketed Body
PAC-SLA104	24, 25.5	28	1018 Steel, Pocketed Body
PAC-SLA110	12, 13.5	35	1018 Steel, Pocketed Body
PAC-SLA111	15, 16.5	35	1018 Steel, Pocketed Body
PAC-SLA112	18, 19.5	35	1018 Steel, Pocketed Body
PAC-SLA113	21, 22.5	35	1018 Steel, Pocketed Body
PAC-SLA114	24, 25.5	35	1018 Steel, Pocketed Body



Why Double Shear?

Less stress = longer life, and you finish the race!

When designing any bolted joint, especially with a rod end, it is best practice to use a double shear connection. This means that there is material on either side of one of the components, resulting in three contact areas on the bolt instead of two.



Double Shear Design = MOST RELIABLE



200 Series Link Arm Assembly



300 Series Link Arm Assembly



100 Series Link Arm Assembly

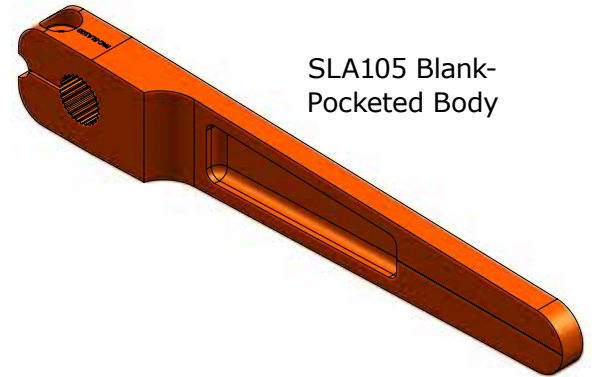
Single Shear Design



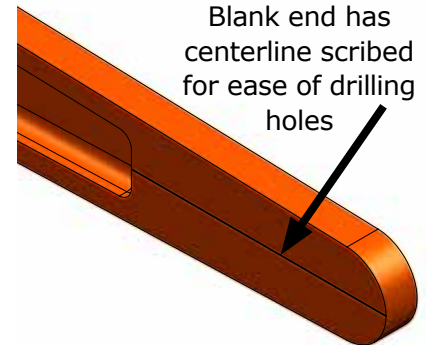
100 Series Link Arm Blanks

For the builder/fabricator not interested in a spherical bearing connection to the radius rod, we also stock the same machined link arms with a blank end so you can drill your own holes or design an end condition specific for your application. The steel arms have the same pocketed body as the SLA100-104's.

Part Number	Length Range	Spline Count	Material
Part Number includes spherical bearing and retaining ring. Also includes a premium ARP 7/16" bolt and ARP locknut to clamp down on the splines			
Aluminum			
PAC-ALA105	9" - 13.5"	28	6061-T6, Anodized Black, Blank End
PAC-ALA106	12" - 16.5"	28	6061-T6, Anodized Black, Blank End
PAC-ALA107	15" - 19.5"	28	6061-T6, Anodized Black, Blank End
PAC-ALA108	18" - 22.5"	28	6061-T6, Anodized Black, Blank End
PAC-ALA109	21" - 25.5"	28	6061-T6, Anodized Black, Blank End
PAC-ALA115	9" - 13.5"	35	6061-T6, Anodized Black, Blank End
PAC-ALA116	12" - 16.5"	35	6061-T6, Anodized Black, Blank End
PAC-ALA117	15" - 19.5"	35	6061-T6, Anodized Black, Blank End
PAC-ALA118	18" - 22.5"	35	6061-T6, Anodized Black, Blank End
PAC-ALA119	21" - 25.5"	35	6061-T6, Anodized Black, Blank End
Any of these arms can be upgraded to 7075 aluminum, call for pricing.			
Steel			
PAC-SLA105	11"-13.75"	28	1018 Steel, Blank End, Pocketed Body
PAC-SLA106	14"-16.75"	28	1018 Steel, Blank End, Pocketed Body
PAC-SLA107	17"-19.75"	28	1018 Steel, Blank End, Pocketed Body
PAC-SLA108	20"-22.75"	28	1018 Steel, Blank End, Pocketed Body
PAC-SLA109	23"-25.75"	28	1018 Steel, Blank End, Pocketed Body
PAC-SLA115	11"-13.75"	35	1018 Steel, Blank End, Pocketed Body
PAC-SLA116	14"-16.75"	35	1018 Steel, Blank End, Pocketed Body
PAC-SLA117	17"-19.75"	35	1018 Steel, Blank End, Pocketed Body
PAC-SLA118	20"-22.75"	35	1018 Steel, Blank End, Pocketed Body
PAC-SLA119	23"-25.75"	35	1018 Steel, Blank End, Pocketed Body



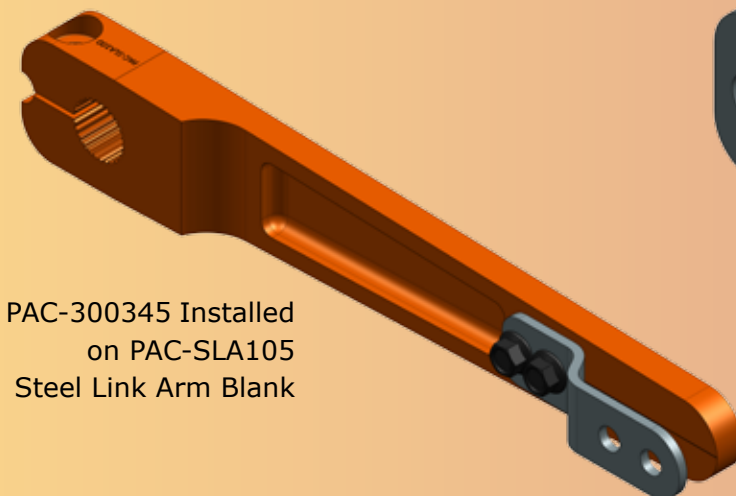
SLA105 Blank-Pocketed Body



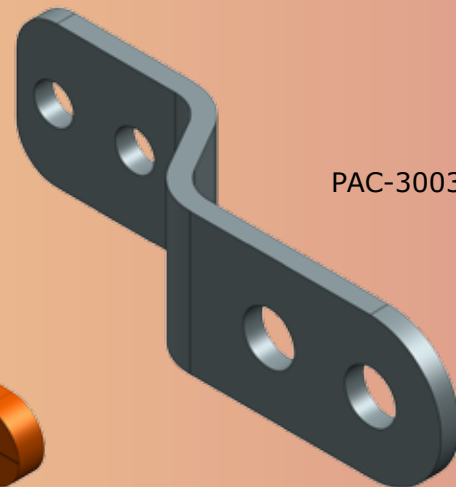
Blank end has centerline scribed for ease of drilling holes

Double Shear Bracket for Link Arm Blanks — PAC-300345

Want to use a rod end at the end of your premium machined link arm, but don't want a single shear connection? Our double shear bracket is for you. Comes with two ARP bolts and top lock jam nuts to bolt to the link arm blank, all you have to do is place the bracket in the desired position and drill the holes. The 1/2" holes for mounting a rod end have 1" of spacing between them.



PAC-300345 Installed on PAC-SLA105 Steel Link Arm Blank



PAC-300345

High Strength Racing Link Arms (cont.)

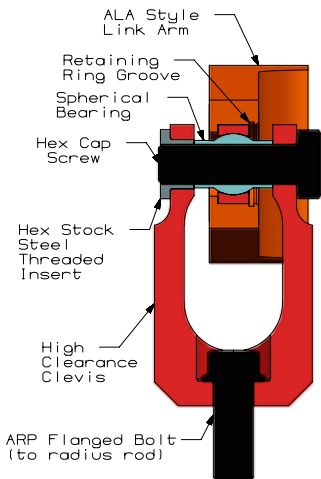
Our clevis' have been designed specifically to mate up to the 100 Series ALA style aluminum or steel arms, without needing spacers or bushings. One side of the aluminum clevis has an integrated steel threaded insert to reduce the assembly width and prevent clearance issues with suspension and chassis components.

The high clearance clevis and steel clevis are made specifically for high articulation applications where any one of the following criteria are met:

- More than 16" of wheel travel (not shock but actual wheel travel based on suspension geometry)
- Using the first mounting hole closest to the splines (length of either 12", 15", 18", 21", 24")
- ALA Armor end caps (below) are being used
- At ride height the radius rod is not vertical
- At ride height the link arm is not horizontal



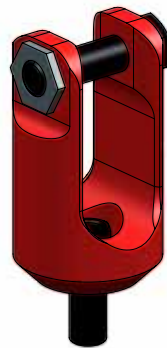
Steel Clevis Assembled PAC-300271



Part Number	Material	Dimensions
Aluminum clevis includes hex cap screw, and steel threaded insert to bolt to the link arm. Steel clevis includes a hex cap screw, 2 washers, and a top lock jam nut. Also includes a 1/2-20 x 1.25" ARP bolt to connect to a radius rod.		
PAC-300270	7075 Aluminum, Anodized Orange	1.875" OD x 2.75" long
PAC-300306	7075 Aluminum, Anodized Orange	High Clearance, 2" OD x 3.5" long
PAC-300271	3/16" Steel, Bent Construction	1.5" Wide x 3.5" Long



PAC-300270



PAC-300306



PAC-300271

ALA ARMOR PAC-300312

Worried about possible rubbing of aluminum arms on rocks, chassis, or suspension? Your sway bar arms can definitely take a beating on race day. Our armor helps to get you to the finish line.



ALA Armor Fully Assembled on 100 Series Link Arm

Sportsman Offroad Link Arm Kits

200 Series Inserts and Link Arms

The 300260 inserts can either be bolted or welded to the arm design and length of your choice. We offer a low cost PAC-SLA200 steel arm made of rectangular tubing that covers a wide range of applications. You can cut a section out to put a bend in the arms and then reweld them, or drill more holes for greater tuning capability. If you prefer to fabricate the arms yourself, then only the inserts are needed.

28 Spline Inserts

PAC-300260-1S



Part Number	Material	Overall Dimensions	Bolt Pattern
Part Number includes a 7/16" ARP bolt and ARP locknut to clamp down on the splines. Also includes 2 custom cut large washers, 2 hex cap screws and 2 jam top lock nuts to bolt to an SLA style link arm.			
PAC-300260-6A	6061-T6 Aluminum	4.625" L x 1.75 H x 1.25" W	1/2" holes, 1" center spacing
PAC-300260-7A	7075 Aluminum	4.625" L x 1.75 H x 1.25" W	1/2" holes, 1" center spacing
PAC-300260-1S	Low Carbon Steel	4.625" L x 1.75 H x 1.25" W	1/2" holes, 1" center spacing
35 Spline not available			



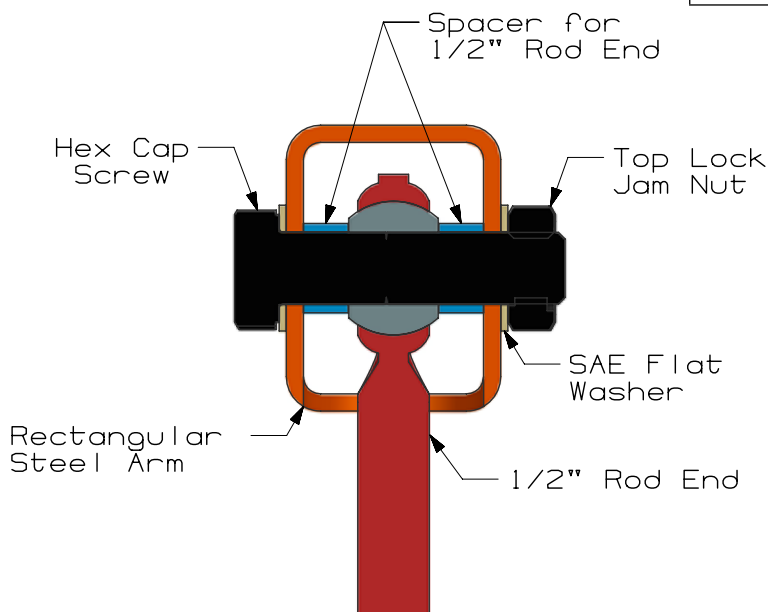
200 Series Rectangular Steel Arms



PAC-SLA200

Part Number	Length Range**	Material/Comments
Part Number includes 2 washers, a hex cap screw, a jam top lock nut, and 2 spacers to mount and center a 1/2" rod end.		
PAC-SLA200	12, 13, 14	2 x 1.5 x .120 Wall Rectangular Tubing
PAC-SLA201	15, 16, 17	2 x 1.5 x .120 Wall Rectangular Tubing
PAC-SLA202	18, 19, 20	2 x 1.5 x .120 Wall Rectangular Tubing
PAC-SLA203	21, 22, 23	2 x 1.5 x .120 Wall Rectangular Tubing
PAC-SLA204	24, 25, 26	2 x 1.5 x .120 Wall Rectangular Tubing

** When used with 300260 link arm inserts, will result in arm length chosen here



Arm Assembly
(PAC-SLA200 with PAC-300260-1S with rod end)

Link Arm Pro Fabricator Inserts and Arms

Prefer to completely weld and design your own arms? Then our round splined weld insert is for you. These are made from 4130 chromoly for the ultimate in strength and durability. We also offer laser cut side pieces in 1/8" and 3/16" thicknesses which make it easy to fab your own arms. Order the top and bottom 1/8" thick strips to box in the arm and a high misalignment rod end to get a complete "custom" arm package. We highly recommend fully boxing in any welded arm design to handle the loads without deflection.

Round Weld Insert

Part Number	Spline Configuration	Dimensions
PAC-300308	28 Spline	2.00" OD x 1.50" wide
PAC-300309	35 Spline	2.00" OD x 1.50" wide



Spline Clamp Tube

We have selected and cut to length a tube that can be welded directly to the front of the arm for clamping down on the splines. It has a radius cut out which fits into the PAC-300308 or PAC-300309 OD (picture left)



3" length can be used for the 35 spline or 28 spline application. Purchase of the tube comes with a 7/16" ARP bolt and ARP top lock nut.

Part Number	Length	OD	ID
PAC-300339	3.00"	.937"	.500"

PAC-300339

High Misalignment Rod End (For Pro-Fab Arm)

We have selected a FK high misalignment rod in the 1/2" size that is 15/16" wide, matching the OD of the PAC-300339 spline clamp tube for easy alignment. Order the rod end and use it as a jig while tacking in the arms to keep proper spacing. All rod end purchases come with a jam nut.



Part Number	Width	Hole Size	Shank
PAC-300329	.937"	.500"	1/2-20 Thread

PAC-300329

300 Series Steel Arm Sides

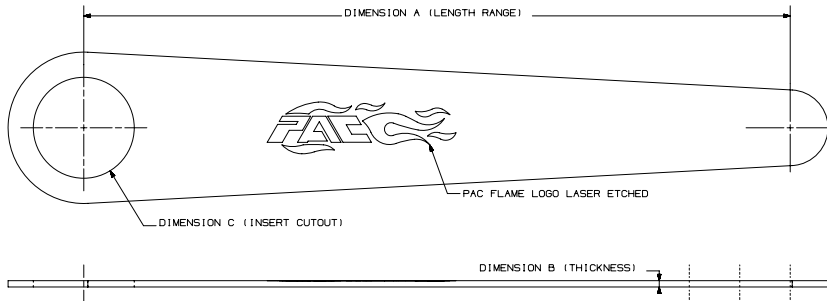
Part Number	Dimension A (length range)	Dimension B (Thickness)	Dimension C (Insert Cutout)
These parts fit with either of the round weld inserts, and come with a hex cap screw, jam top lock nut, and 2 washers for bolting a 300329 rod end in place.			
1/8" wall thickness side plates in stock			
PAC-SLA300	9" - 14"	.125"	2.00"
PAC-SLA301	12" - 17"	.125"	2.00"
PAC-SLA302	15" - 20"	.125"	2.00"
PAC-SLA303	18" - 23"	.125"	2.00"
PAC-SLA304	21" - 26"	.125"	2.00"
3/16" wall thickness side plates in stock			
PAC-SLA305	9" - 14"	.187"	2.00"
PAC-SLA306	12" - 17"	.187"	2.00"
PAC-SLA307	15" - 20"	.187"	2.00"
PAC-SLA308	18" - 23"	.187"	2.00"
PAC-SLA309	21" - 26"	.187"	2.00"



Steel arms can be bent to your application



Complete Link Arm Kit



Steel Strip to Box In Arms

We have selected and cut to length a strip of cold rolled 1018 steel that will fit over the arm sides and still give a nice corner to fillet weld along the length of the arms. PAC Racing has also machined a radius out of the end of the strip which will fit around the PAC- 300339 tube, reducing gaps to a minimum for easy welding, picture below left.

Part Number	Length	Thickness	Width
PAC- 300343	29"	.125"	1.25"



PAC-300343 cut to fit the spline clamp tube



Pro Fabricator Link Arm tacked together

Radius Rods

We offer steel and aluminum radius rods specifically designed for the sway bar application. All welded steel sizes are stocked and ready to ship. Aluminum radius rods are made out of 7075-T651 to prevent threads from pulling out, and are special order only, requiring a 2-3 week lead time. Both steel and aluminum versions have 7/8" flats to put a wrench on for assembly. If you prefer to weld your own steel radius rods together, we can provide you with the pieces, cut to length. See part numbering for this designation.

PART NUMBERING

300273W-OAL

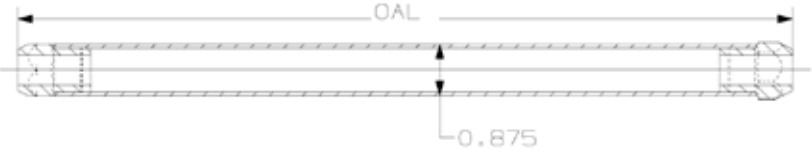
Indicates Welding –
If no welding desired,
remove the W

Overall Length (without ends)
Depends on style of arms

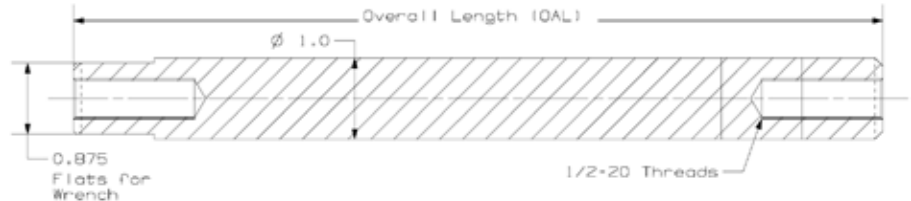


Robotic TIG
welded!

300273W Steel Radius Rods



300310 Aluminum Radius Rods



Overall Length (OAL)

If using Link Inserts and/or PAC-SLA200 series arms - You will need a 1/2" rod end on each side, one right handed, one left handed. See table for assembly length of a radius rod with different end conditions.

If using PAC-ALA100 series aluminum arms - A left hand rod end is only needed on one side, and our 300270 clevis, 300271 steel clevis, or 300306 high clearance clevis (page 24) can be bolted onto the other side. Each clevis requires an extra amount of length over a rod end, see table below for final assembly lengths using a standard length radius rod.

Steel Part Number (in stock)	Aluminum Part Number (in stock)	Steel Arms Assembly Length (w/2 Rod Ends)	Aluminum Arms Assembly Length (LH Rod End, 300270 Clevis)	Aluminum Arms Assembly Length (LH Rod End, 300306 high clearance or 300271 steel clevis)
300273W-3	300310-3	6	6.5	7.5
300273W-4	300310-4	7	7.5	8.5
300273W-5	300310-5	8	8.5	9.5
300273W-6	300310-6	9	9.5	10.5
300273W-7	300310-7	10	10.5	11.5
300273W-8	300310-8	11	11.5	12.5
300273W-9	300310-9	12	12.5	13.5
300273W-10	300310-10	13	13.5	14.5
300273W-11	300310-11	14	14.5	15.5
300273W-12	300310-12	15	15.5	16.5
300273W-13	300310-13	16	16.5	17.5
300273W-14	300310-14	17	17.5	18.5
300273W-15	300310-15	18	18.5	19.5
300273W-16	300310-16	19	19.5	20.5
300273W-17	300310-17	20	20.5	21.5
300273W-18	300310-18	21	21.5	22.5
300273W-19	300310-19	22	22.5	23.5
300273W-20	300310-20	23	23.5	24.5
300273W-21	300310-21	24	24.5	25.5
300273W-22	300310-22	25	25.5	26.5
300273W-23	300310-23	26	26.5	27.5
300273W-24	300310-24	27	27.5	28.5

We can custom make any length or fraction of whole sizes, contact us for details.

Authorized Master Distributor for FK Rod Ends MOST ITEMS IN STOCK!

Rod Ends Selected For Sway Bar Application	
Part Number	Description
Each Rod End Includes a Jam Nut	
PAC-300288R	1/2" Right Hand Regular Rod End, Teflon Lined
PAC-300288L	1/2" Left Hand Regular Rod End, Teflon Lined
PAC-300289R	1/2" Right Hand Premium Rod End, Teflon Lined
PAC-300289L	1/2" Left Hand Premium Rod End, Teflon Lined
PAC-300329	1/2" High Misalignment Rod End, Teflon Lined, Right Hand

Racing Application Rod Ends	
Series	Description
JM	3 Piece, Precision Male, Low Carbon Steel Body
JMX	3 Piece, Precision Male, Alloy Body
JF	3 Piece, Precision Female, Low Carbon Steel Body
JFX	3 Piece, Precision Female, Alloy Body
KMX	3 Piece, Alloy Steel, Nylon Race
ALJM	3 Piece, Aluminum Body, Male
ALJMH	3 Piece, Aluminum Heavy Duty, Male
ALJF	3 Piece, Aluminum Body, Female
RSM	3 Piece, Low Carbon Steel Body, Heavy Shank
RSMX	3 Piece, Alloy Steel Body, Heavy Shank
ALRSM	3 Piece, Aluminum Body, Heavy Shank
HJMX-T	3 Piece, High Misalignment, Teflon
HRSMX-T	3 Piece, High Misalignment, Heavy Shank, Teflon
HIN-T	Spherical Bearing, High Misalignment
PMX-T	3 Piece, Performance Racing, Alloy Body, Teflon
SJM-T	3 Piece, Stainless Body, Male, Teflon
SRSMT	3 Piece, Stainless Body, Heavy Shank, Male, Teflon
SJF-T	3 Piece, Stainless Body, Female, Teflon
COM	Spherical Bearing, Low Carbon Steel Race
FKS	Spherical Bearing, Alloy Steel Race
FKSSX	Spherical Bearing, Stainless Steel Race
WSSX-T	Spherical Bearing, Wide Series, Plain, Teflon
WSSX-TV	Spherical Bearing, Wide Series, Grooved, Teflon
AIN	Spherical Bearing, Alloy Steel Race, Heavy Duty

Additional rod ends available, visit www.fkrodends.com for a complete product list.



Spherical bearing selected for 100 Series rms

Table of Thread Size Vs. Hole Size (All fine threads unless specified)

Size (Hole)	JM	JMX	JF	JFX	KMX	ALJM	ALJMH	ALJF	RSM	RSMX	ALRSM	HJMX-T	HRSMX-T	PMX-T	SJM-T	SRSM-T	SJF-T
5 (.3125)	5/16	5/16	5/16	5/16	5/16	5/16		5/16	3/8	3/8	3/8			5/16	5/16		5/16
6 (.250)	3/8	3/8	3/8	3/8	3/8	3/8		3/8	1/2	1/2	1/2	3/8	7/16	3/8	3/8	7/16	3/8
7 (.4375)	7/16	7/16	7/16	7/16		7/16			1/2	1/2	1/2	7/16	1/2	7/16	7/16	1/2	7/16
8 (.500)	1/2	1/2	1/2	1/2	1/2	1/2	1/2	1/2	5/8	5/8	5/8	1/2	5/8	1/2	1/2	5/8	1/2
8-6 (.375)		1/2				1/2					5/8						
10 (.625)	5/8	5/8	5/8	5/8	5/8	5/8	5/8		3/4	3/4	3/4	5/8	3/4	5/8	5/8	3/4	5/8
10-8 (.500)					5/8					3/4	3/4						
12 (.75)	3/4	3/4	3/4	3/4	3/4	3/4	3/4			7/8		3/4	7/8	3/4	3/4		3/4
12-8 (.500)					3/4												
12-10 (.625)					3/4												
14 (.875)		7/8			7/8					1-14							
16 (1.00)	1.25-12	1.25-12	1.25-12	1.25-12	1.25-12												
16-1 (1.00)	1-14	1-14	1-14	1-14													
16-2 (1.00)	1-12		1-12														
24-1 (1.50)				1.5-12													

All Products listed are available with teflon lined race, denote with a suffix of T, Ex. JMX10T
 To denote a left handed rod end, add an L before the size designation, Ex. JMXL10T
 For all technical details, visit www.fkrodends.com for more information.

Spherical Bearings

Table shows Ultimate Static Radial Load

	AIN	WSSX-T / WSSX-TV	COM*	FKS	FKSSX	HIN-T
3 (.1875)	6550	2500	3250	6480	4800	
4 (.250)	8427	5500	4950	10000	7400	7560
5 (.3125)	12912	9400	6475	13900	9700	
6 (.250)	17512	13700	8400	18000	11900	16983
7 (.4375)	21290	20700	9453	22300	14180	19023
8 (.500)	28110	21400	13250	26900	17900	25275
9 (.5625)		26600	16630	36000	24900	
10 (.625)	37930	29000	21280	48000	31900	44652
12 (.75)	48675	37000	31920	78000	47850	53716
14 (.875)	48675	65200	41960	103000	62900	
14T-770 (.875)	58650			125000	82800	
16 (1.00)	90000	104000	55200			
24 (1.50)		281531				

* Additional sizes available other than listed here, see FK Bearings website for complete product list.



SWAY BAR CUSTOM ORDER SHEET

We can create any sway bar specific for your application. Spline patterns, custom lengths, and larger/smaller diameters are all easily changed to your exact specifications.



www.RacingSprings.com

NAME _____
 COMPANY NAME _____
 ADDRESS _____
 ADDRESS _____
 CITY _____ STATE ____ ZIP CODE _____
 COUNTRY _____
 PHONE NUMBER _____
 FAX NUMBER _____
 EMAIL ADDRESS _____
 WEBSITE _____

Fax to: (248) 350-3206

PAC Racing Springs
 21200 Telegraph Road
 Southfield, MI 48033
 1-866-799-9417

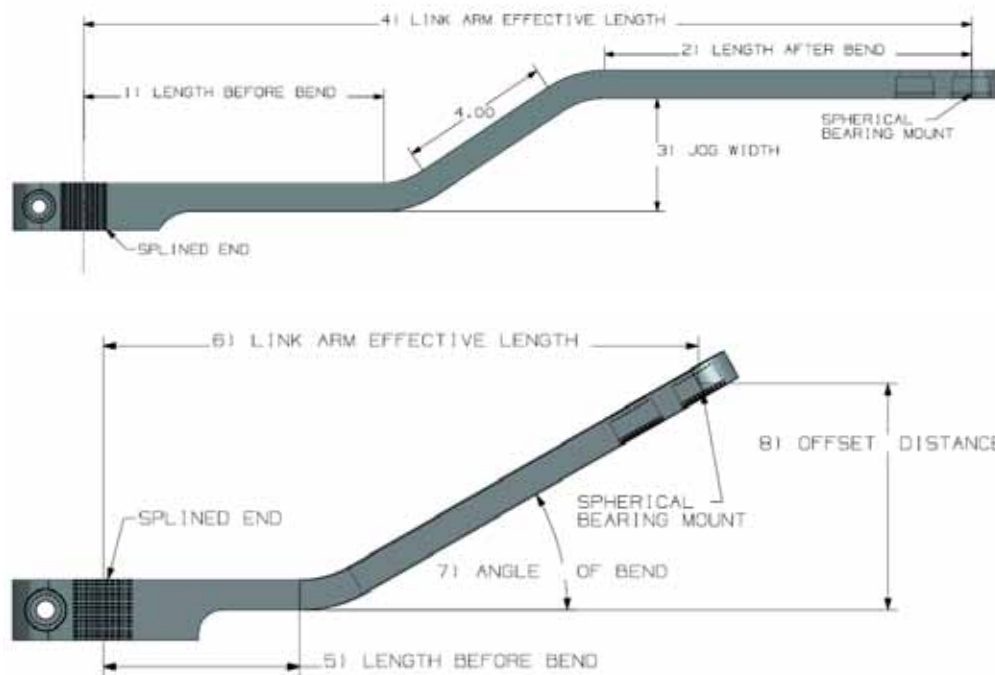
1	Overall Length	
2	Spline Length	
3	Bushing Width	
4	Active Diameter	
5	Spline Diameter	
6	Spline Pattern	



Additional Notes/ Comments: _____

BENT LINK ARM CUSTOM ORDER SHEET

We can bend any of our standard aluminum or steel link arms to your specifications. Please enter your application information, as we need to validate your sizing to ensure that materials are not overstressed.



Your Application Information*	
Wheel Travel	
Radius Rod Length	
Sway Bar Active Diameter	
Sway Bar Material	
*Needed to determine forces experienced due to link arm lengths and suspension travel	

For Jog in Link Arm (2 Bends)		
1	Length Before Bend	
2	Length After Bend	
3	Jog Width	
4	Link Arm Effective Length	

For Single Bend In Link Arm		
5	Length Before Bend	
6	Link Arm Effective Length	
7	Angle of Bend	
8	Offset Distance	

Manufacturers of:

VALVE TRAIN COMPONENTS

- ▶ Titanium Retainers
- ▶ Pacaloy® Steel Retainers
- ▶ Titanium & Steel Locks
- ▶ Spring Cups & Locators
- ▶ Custom Applications



VALVE SPRINGS

- ▶ Drag Race
- ▶ Circle Track
- ▶ Marine
- ▶ Endurance
- ▶ Street & Strip
- ▶ RPM Beehives
- ▶ Custom Applications & Vintage



TOOLS & ENGINEERING

- ▶ Assembly Tools
- ▶ Fully Accredited Metallurgic Lab
- ▶ SpinTron® Engine Testing
- ▶ Rapid Prototype Capability
- ▶ Retail Kits & Specialized Packaging



SUSPENSION SPRINGS

- ▶ Off-Road
- ▶ Drag Race
- ▶ Circle Track
- ▶ Coil Over Shock Springs
- ▶ Road Magnet Series - Lowering
- ▶ Sway Bars & Accessories



Online Store

Visit us online to browse our wide selection, check part availability and to view our current prices.

Please view all of PAC racing components for all of your high performance needs from suspension springs to valve springs and more.



PAC Racing Springs proudly made in the U.S.A.

PAC Racing Springs

21200 Telegraph Road
Southfield, MI 48033

Toll Free: 866-799-9417

Email: racingsprings@pspring.com

Fax: 248-350-3206

www.RacingSprings.com

SWAY BARS

- ▶ Steel
- ▶ Titanium
- ▶ Link Arms
 - Aluminum
 - Steel
 - Fabricated
- ▶ Custom Designs

